

Overview of the Albemarle-Pamlico National Estuary Partnership (APNEP)

Dean E. Carpenter, D. Env.

Albemarle-Pamlico National Estuary Partnership

NRCS Coastal Zone Soil Survey Planning Conference

Savannah, Georgia

9 January 2018



Albemarle-Pamlico Estuarine System: Nation's Second Largest Estuary

Chesapeake Bay



Albemarle Sound



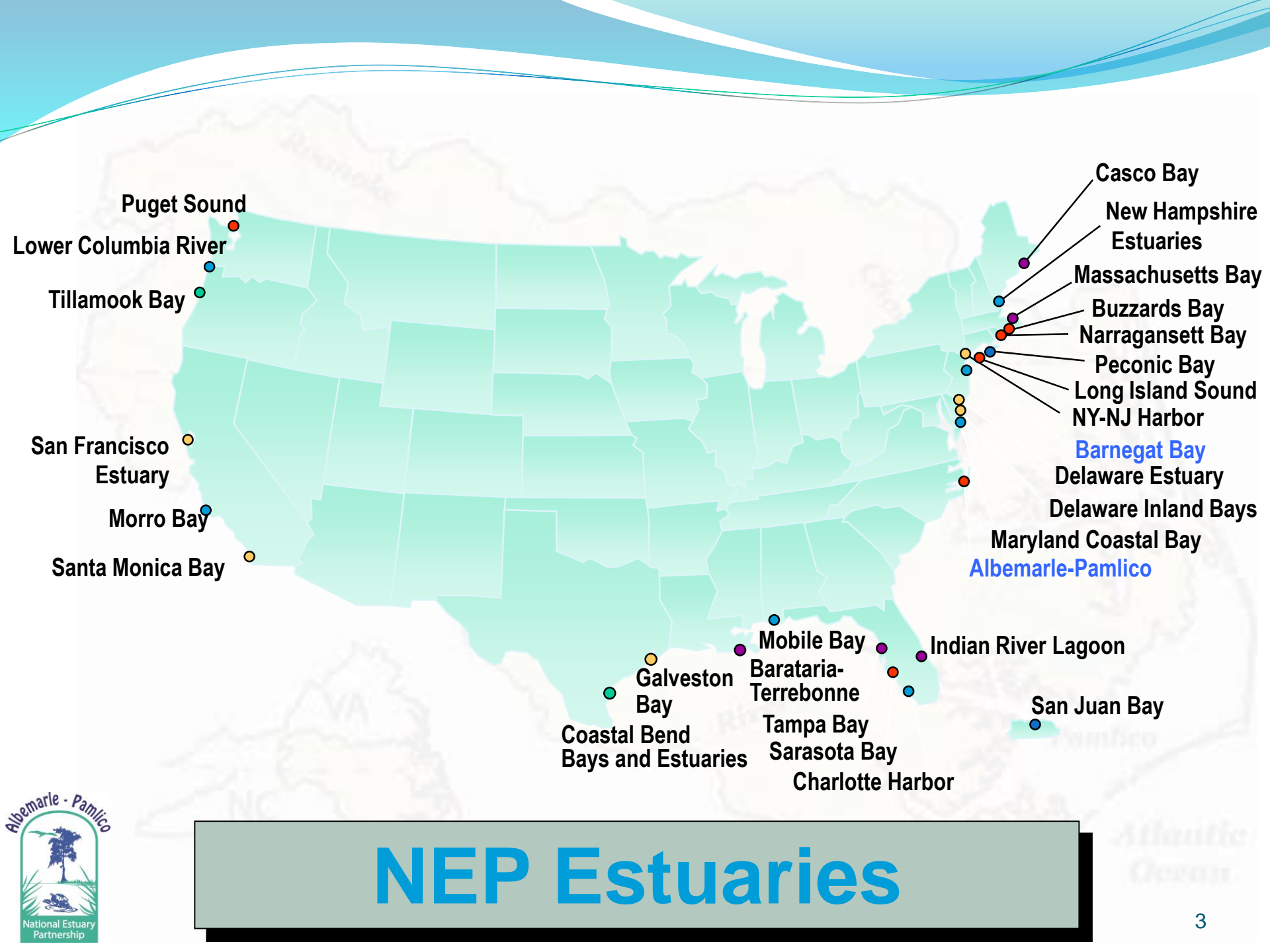
Pamlico Sound



Cape Hatteras

Cape Lookout



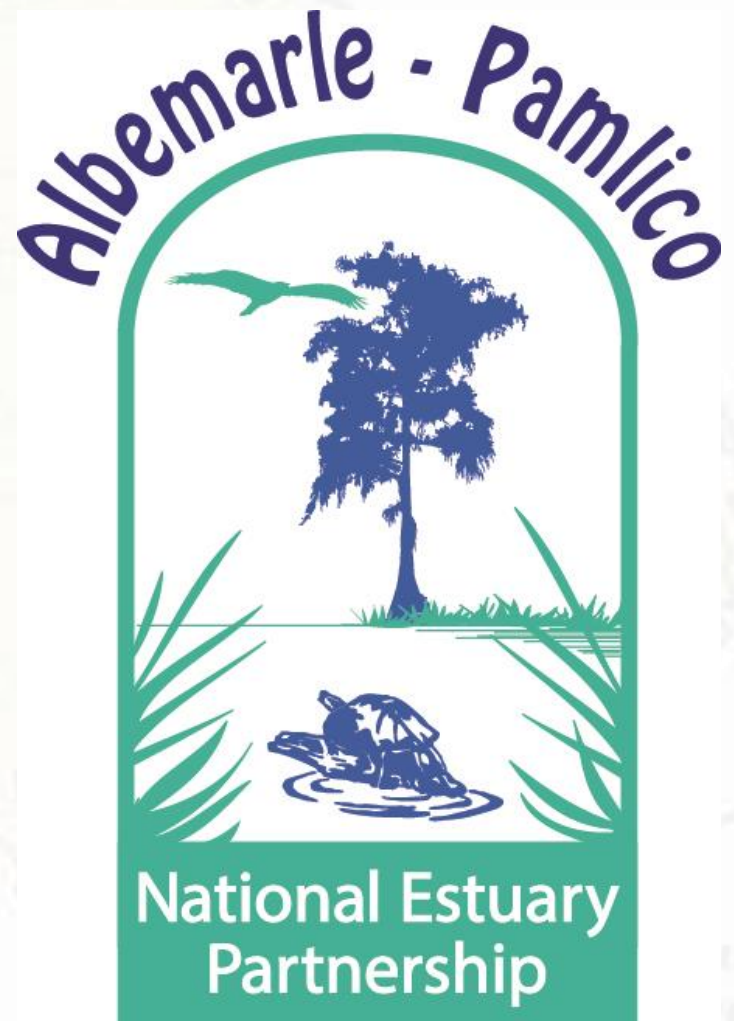


NEP Estuaries



APNEP Mission

“To **identify**, **restore**, and **protect** the significant resources of the Albemarle-Pamlico estuarine system.”



APNEP's Transition to Ecosystem-Based Management

- A **holistic vision and plan** that includes a comprehensive description of the Albemarle-Pamlico system and articulation of multiple management objectives.
- A community that has **effective engagement** of policy makers, managers, scientists, & stakeholders.
- A process that includes effective **adaptive management** to address a changing system.
- A **framework** that includes appropriate authority, implementation area, management institutions, financial resources, and effective communications.

APNEP Implementation Area and Management Institutions

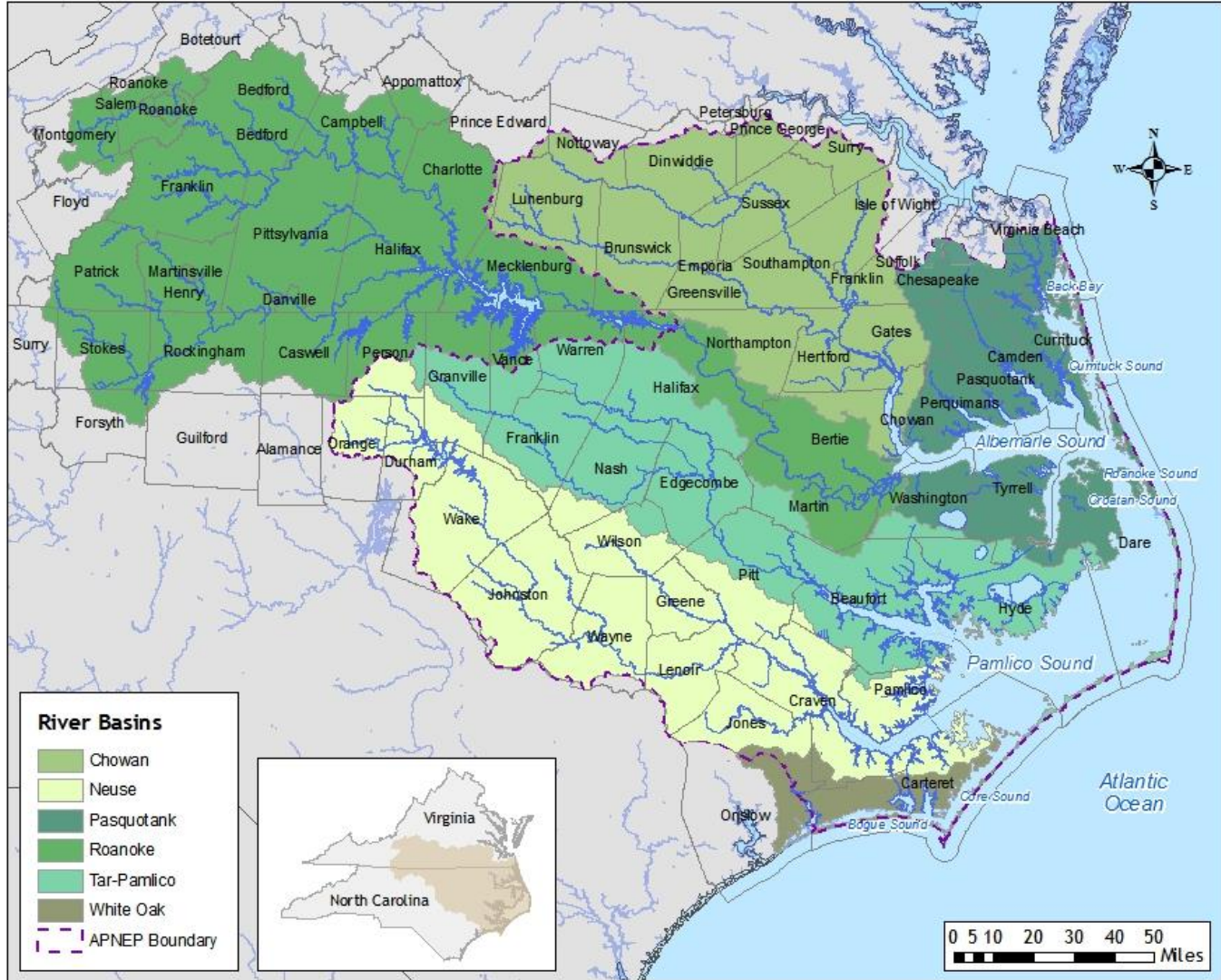
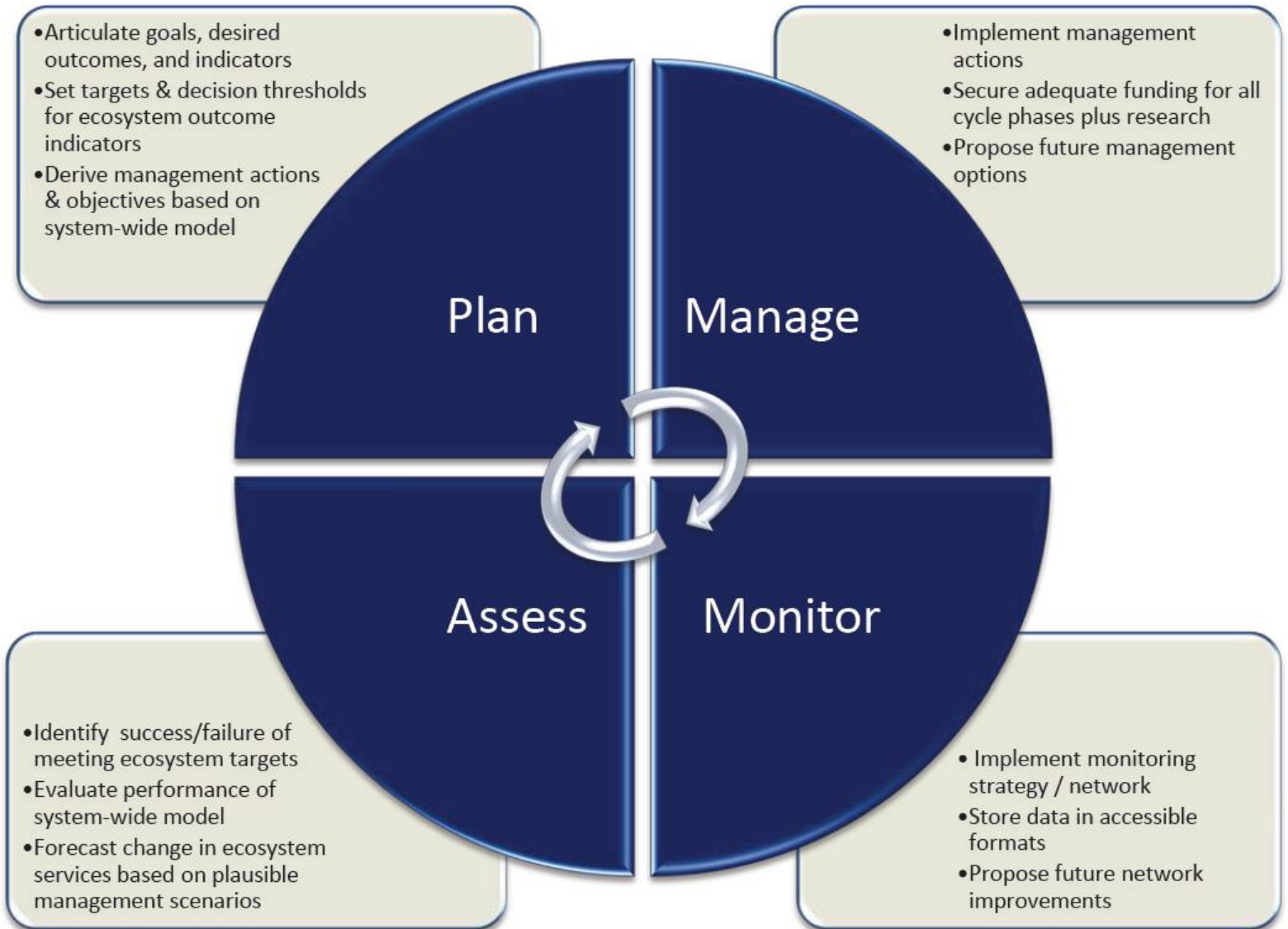
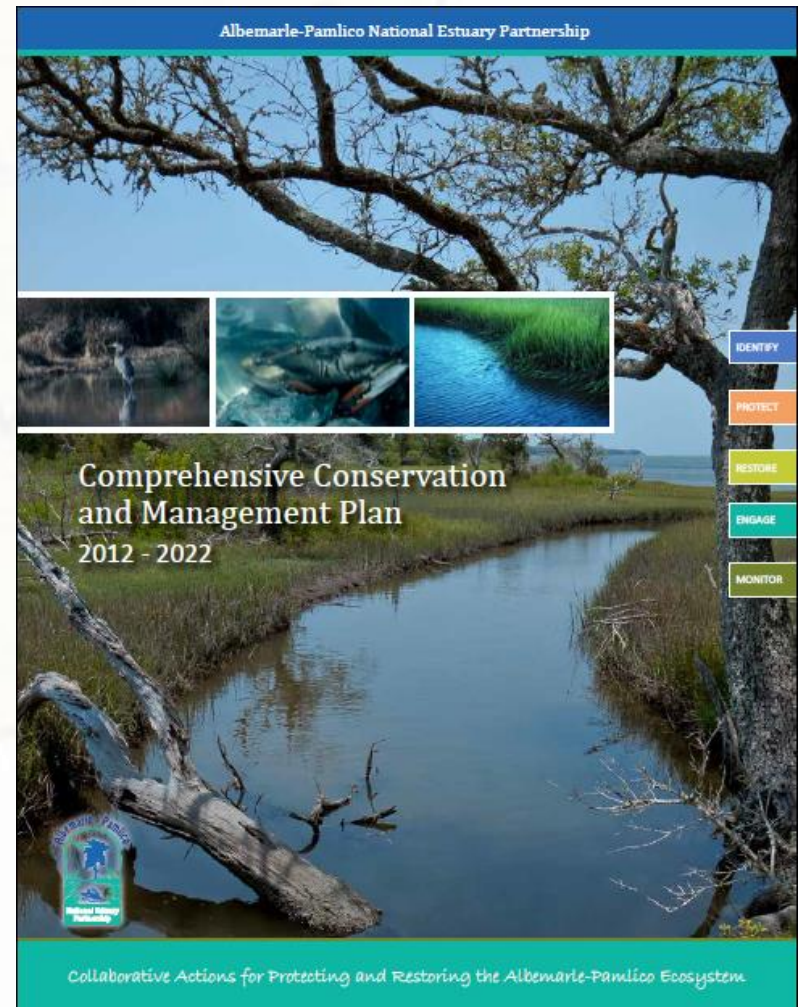


Figure 2: APNEP's adaptive management cycle.



Comprehensive Conservation Management Plan (CCMP)

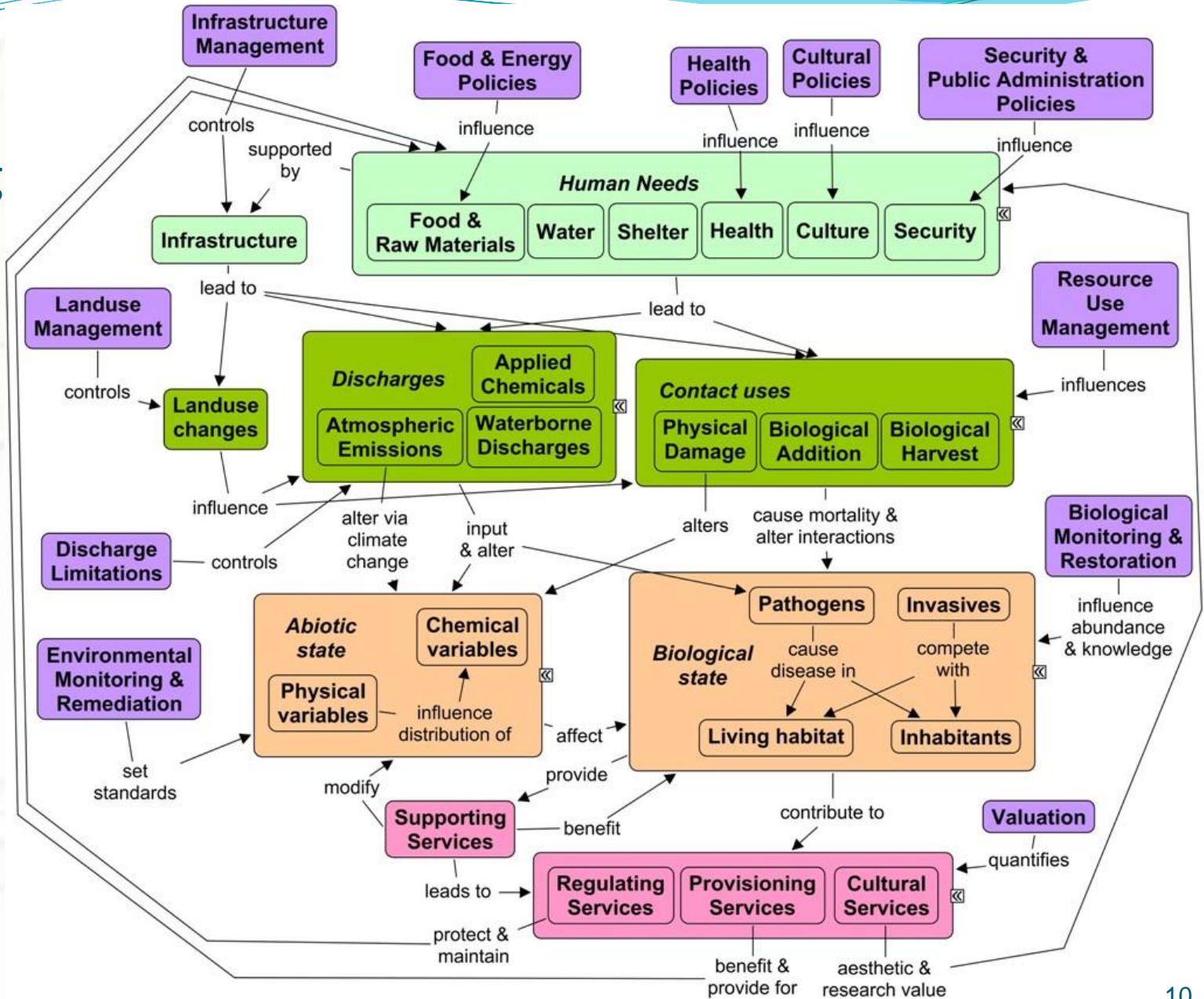
- What is a **healthy** Albemarle-Pamlico Estuarine System?
- What is the **status** of Albemarle-Pamlico Estuarine System?
- What are the biggest **threats** to Albemarle-Pamlico Estuarine System?
- What **actions** should be taken that will move us from where we are today to a healthier Albemarle-Pamlico Sounds by 2022?



APNEP's Ecosystem Health Goals

- A region where **human communities** are sustained by a functioning ecosystem
- A region where aquatic, wetland, and upland habitats support viable populations of **native species**
- A region where **water** quantity and quality maintain ecological integrity

DPSER Modeling



Lt. green = Drivers
 Dk. Green = Pressure
 Orange = State
 Red = Ecosystem Services
 Purple = Response

EPA-ORD-ESRP 2010



2017
ALBEMARLE-PAMLICO
ECOSYSTEM
SYMPOSIUM

Eyes on the Horizon



NRCS as APNEP Partner

- Preliminary Planning for A-P Coastal Zone Survey
 - NRCS staff involvement in APNEP management conference
 - Leveraging related activities & interests of other APNEP partners
- Benefits of Soils Information
 - CCMP Action A1.1: Facilitate the mapping of significant ecological, **bathymetric**, **geologic**, demographic, and cultural features.
 - Impacts to submerged aquatic vegetation
 - Factors
 - Ecosystem services valuation

