


# Subaqueous Landforms

Mark H. Stolt



**Subaqueous landscapes are fundamentally the same as terrestrial systems in that they have a discernable topography from which subaqueous landforms and landscape units may be identified**

An aerial photograph showing a coastal landscape. A large, dark green body of water occupies the central and left portions of the image. To the right, a sandy beach runs along the shoreline, bordered by a dense forest of trees. In the bottom left corner, there is a patch of land with reddish-brown soil and some vegetation. The text is overlaid in the bottom right corner of the image.

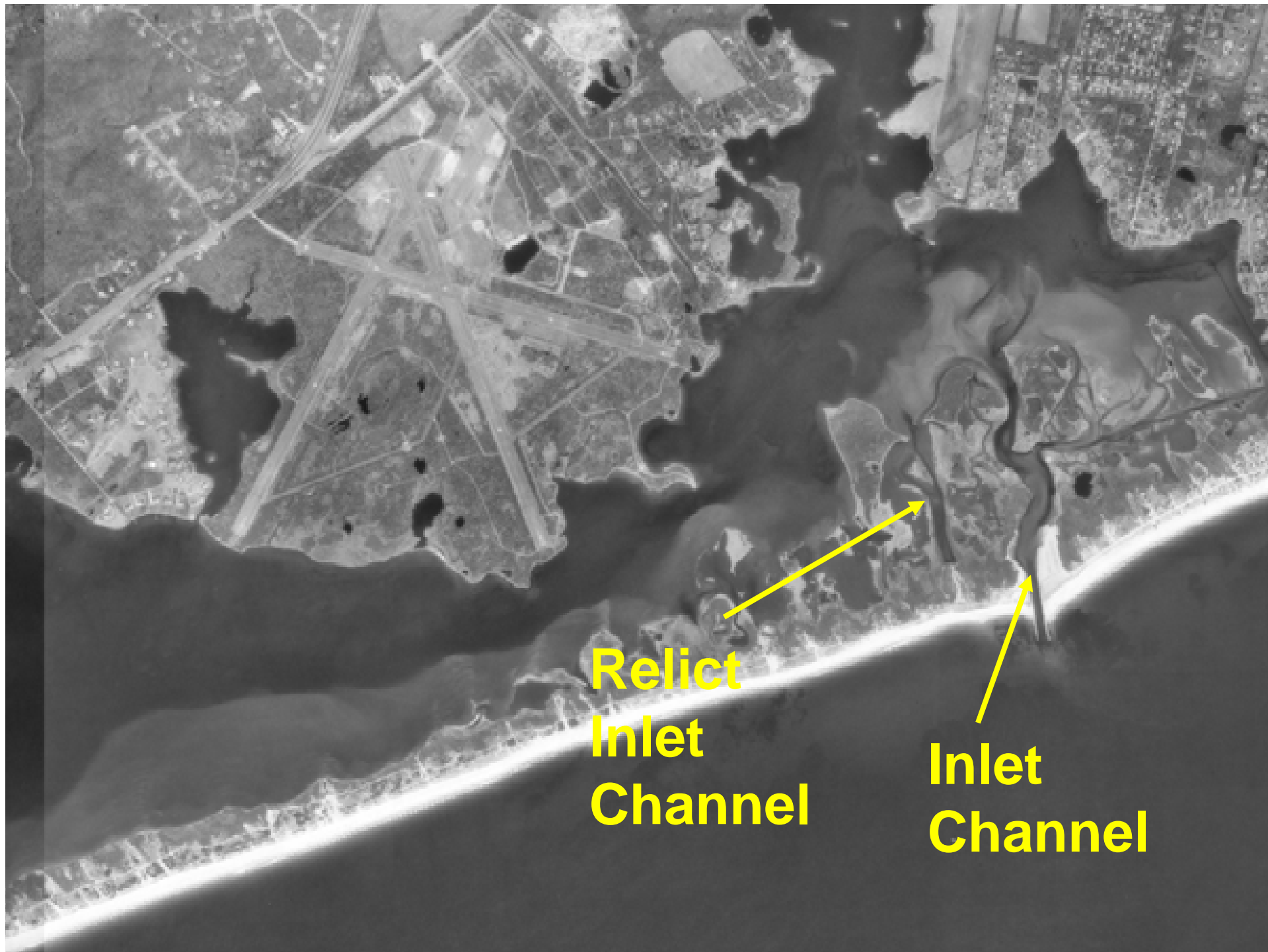
**Identification and delineation of these landforms become the basemap for our subaqueous soil survey**



An aerial photograph showing a coastal landscape. In the upper left, a large, irregularly shaped pond is visible, surrounded by a network of roads and some vegetation. The pond is labeled 'Ninigret Pond'. To the right of the pond, the land slopes down towards a bright, sandy beach. The beach is bordered by the dark, calm waters of the Atlantic Ocean. The coastline is slightly curved, and the ocean extends to the bottom right of the frame.

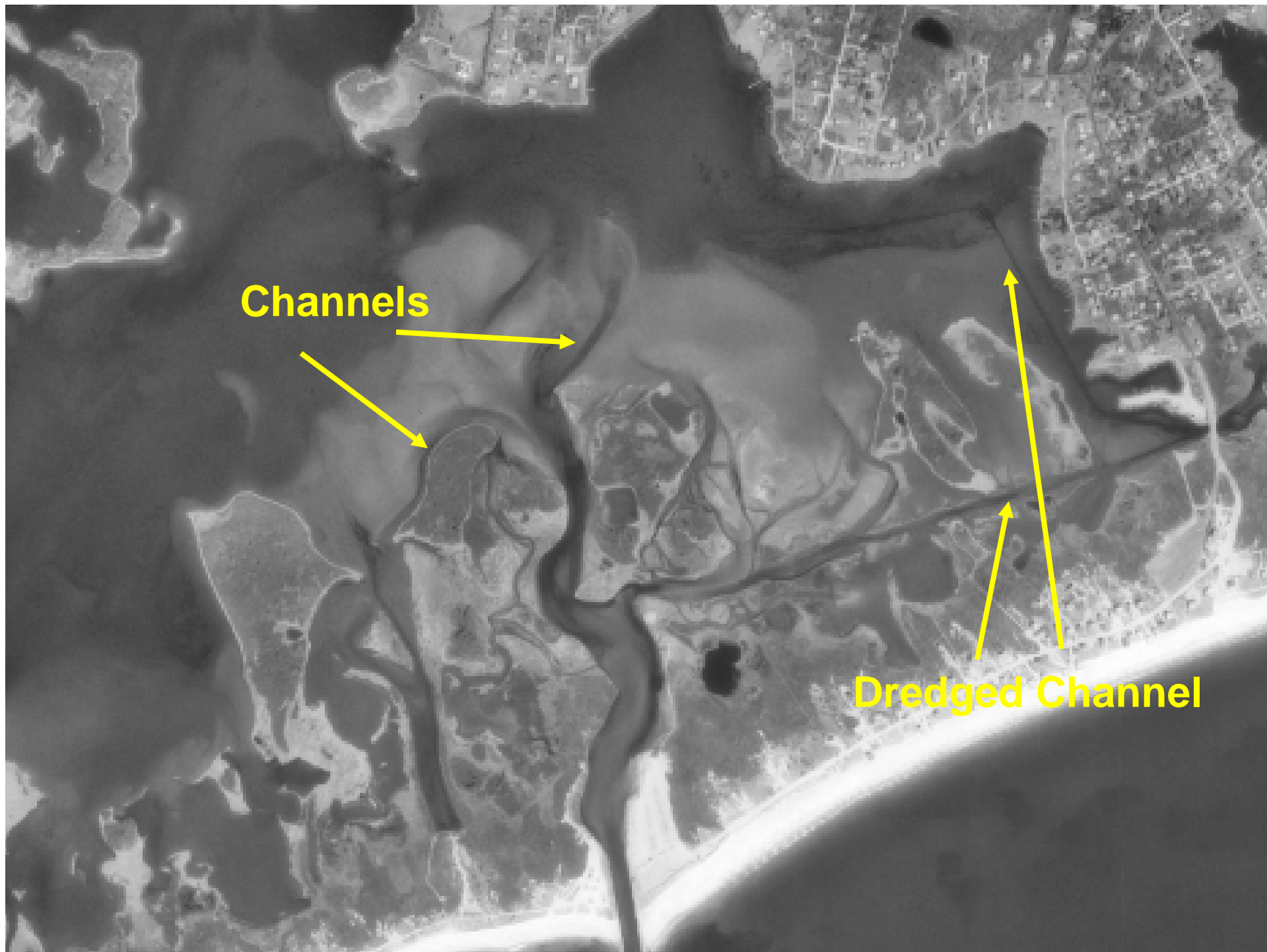
**Ninigret Pond**

**Atlantic Ocean**



**Relict  
Inlet  
Channel**

**Inlet  
Channel**

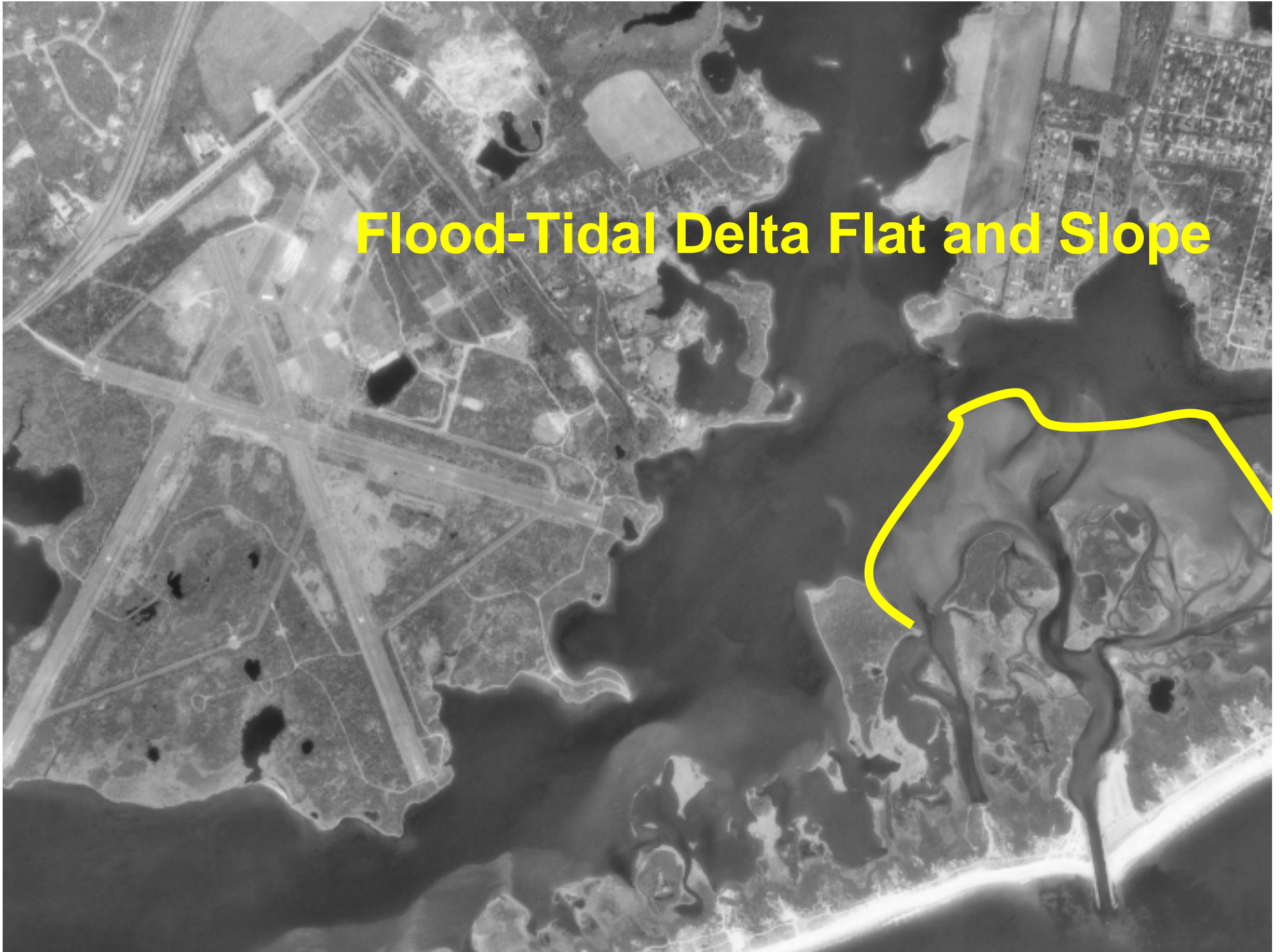


**Channels**

**Dredged Channel**



# Flood-Tidal Delta Flat and Slope



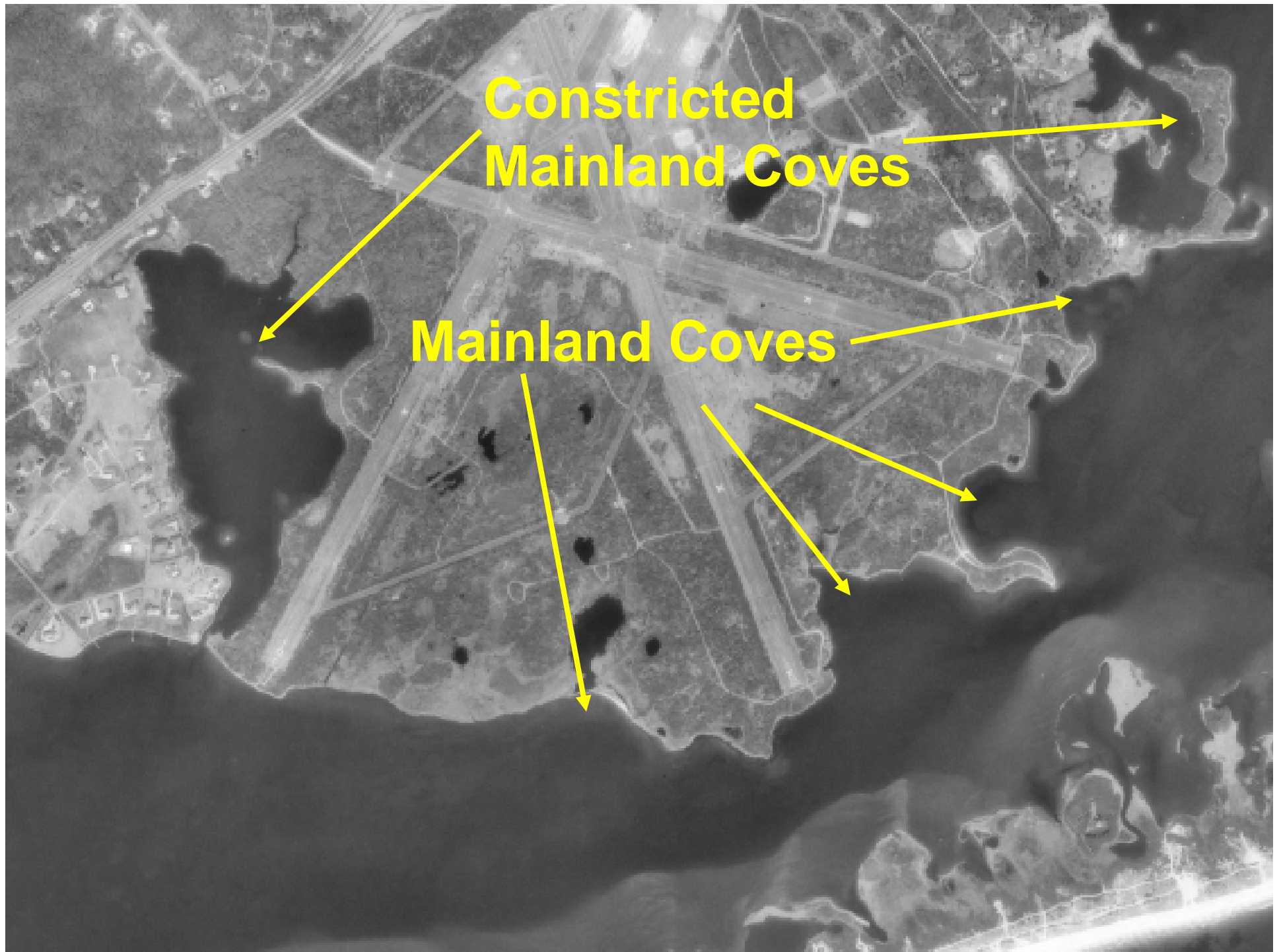


# **Storm-Surge Washover Flat and Slope**



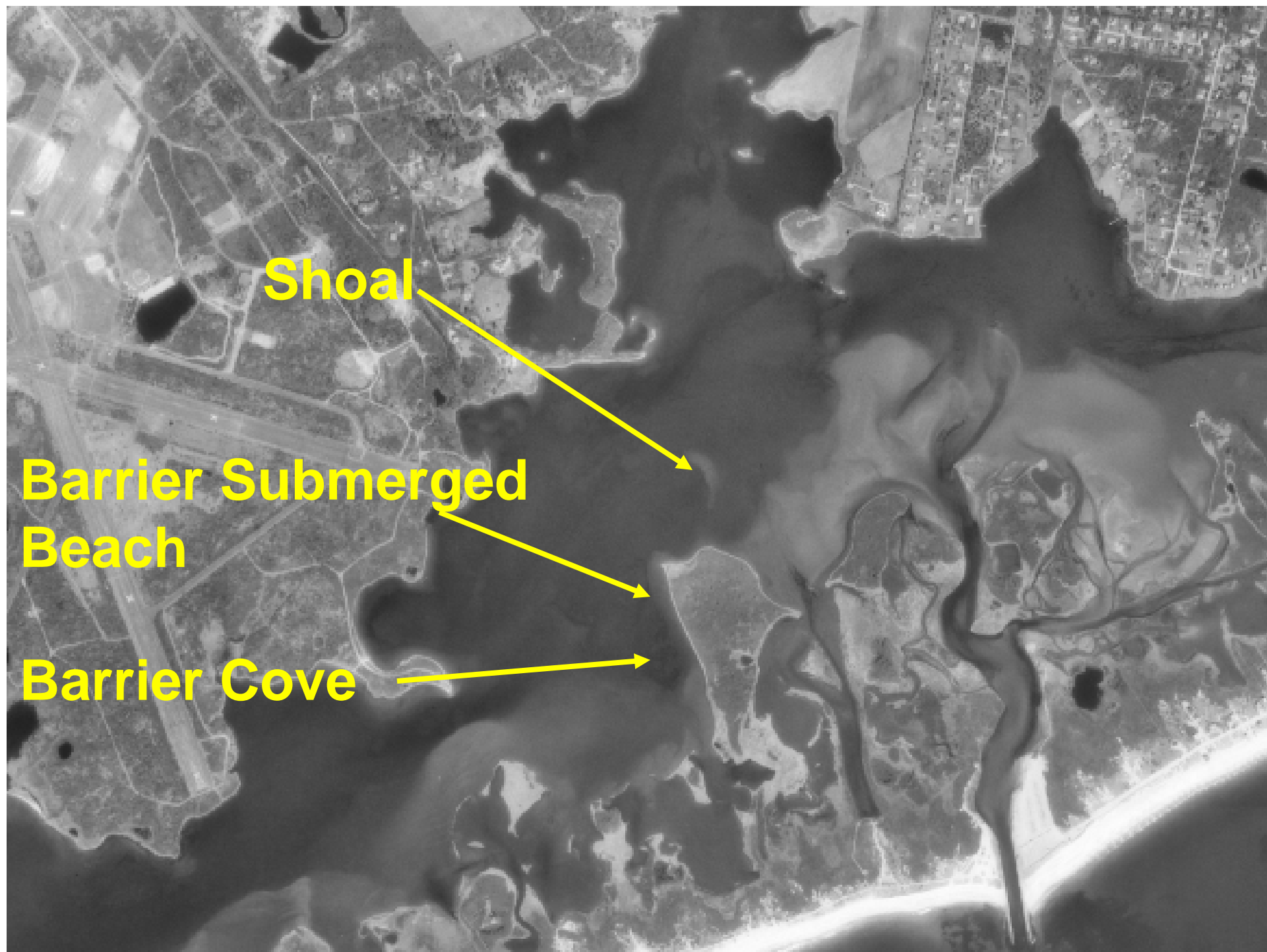
**Lagoon Bottom**





**Constricted  
Mainland Coves**

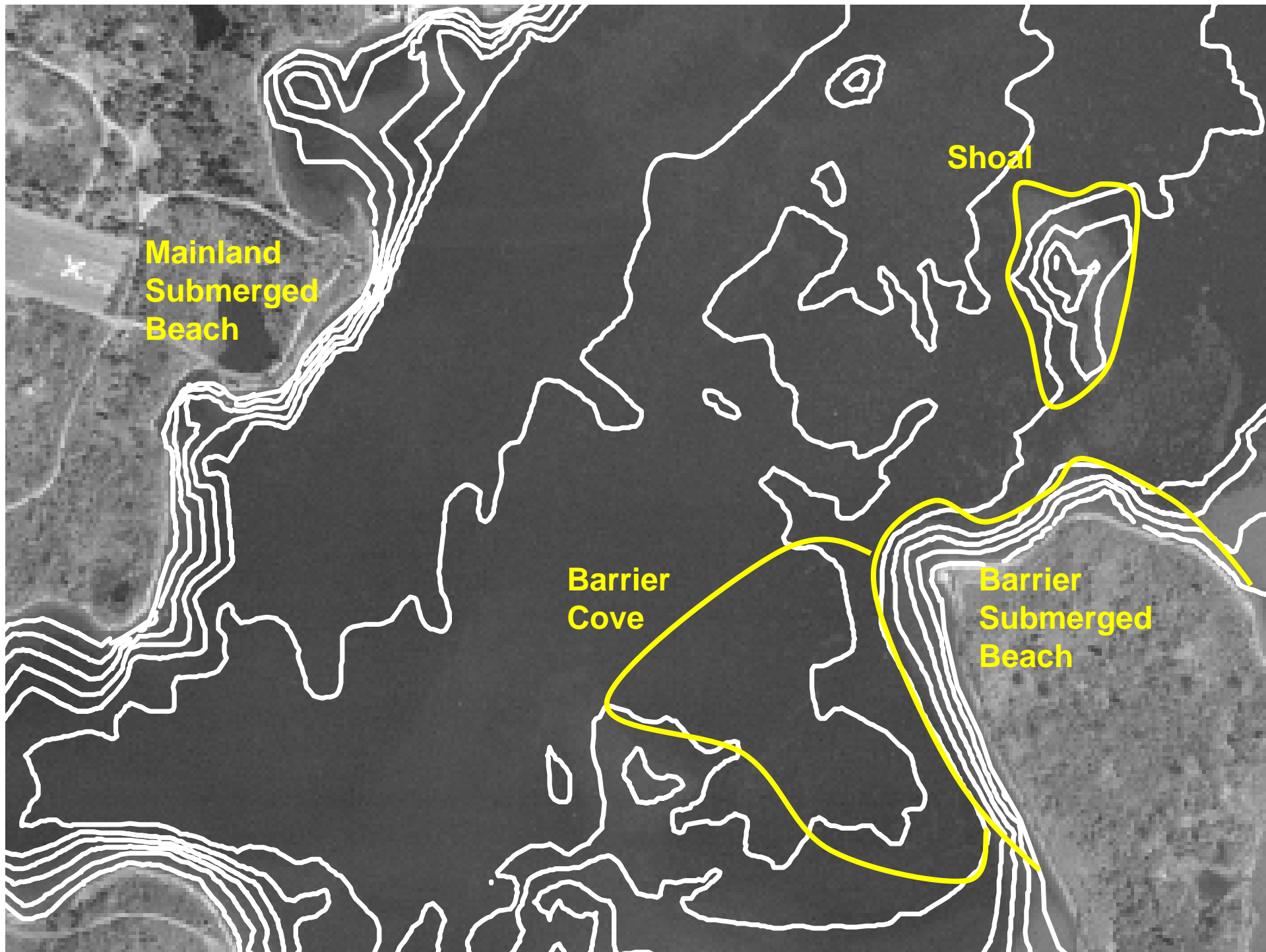
**Mainland Coves**



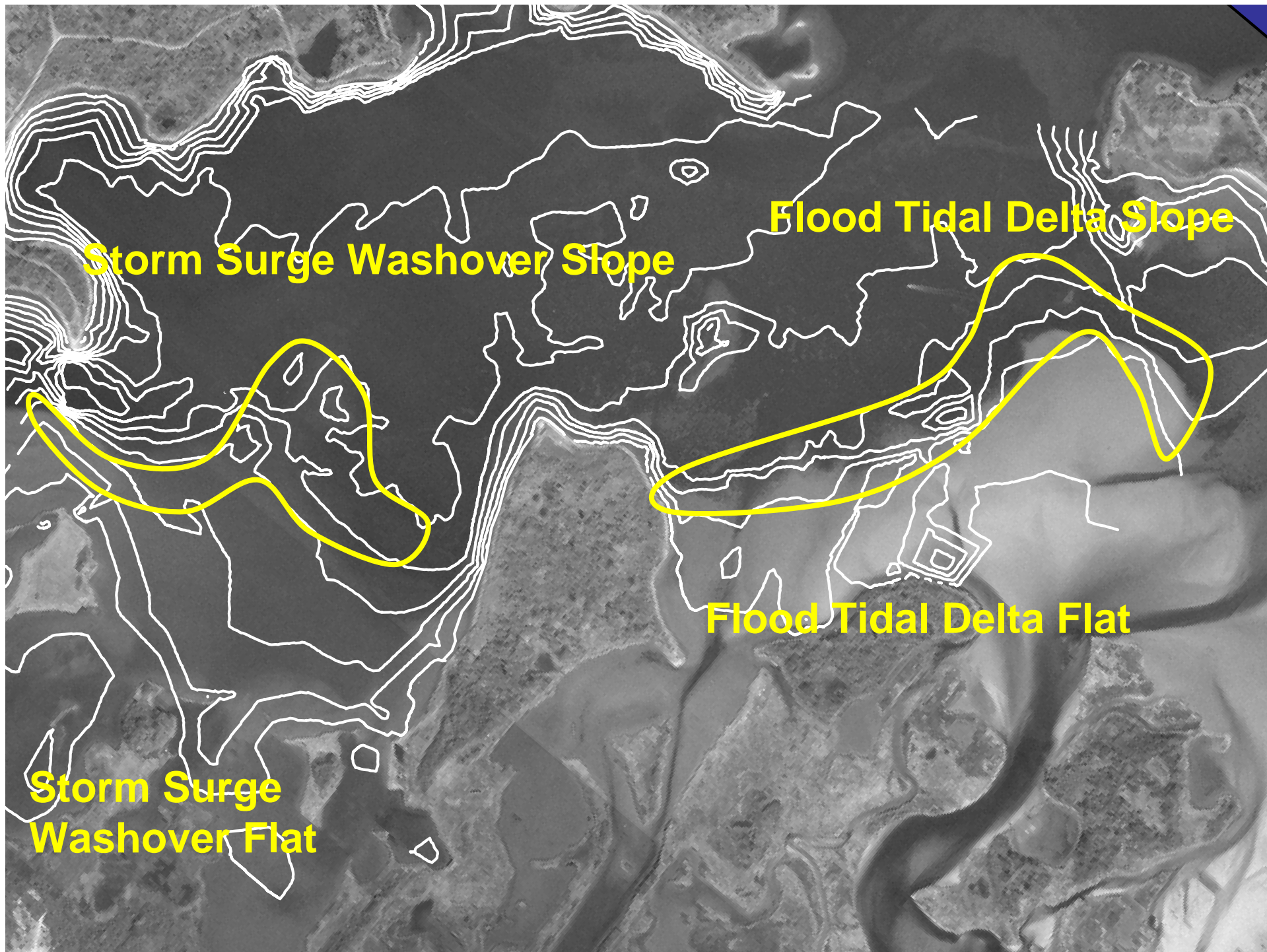
**Shoal**

**Barrier Submerged  
Beach**

**Barrier Cove**







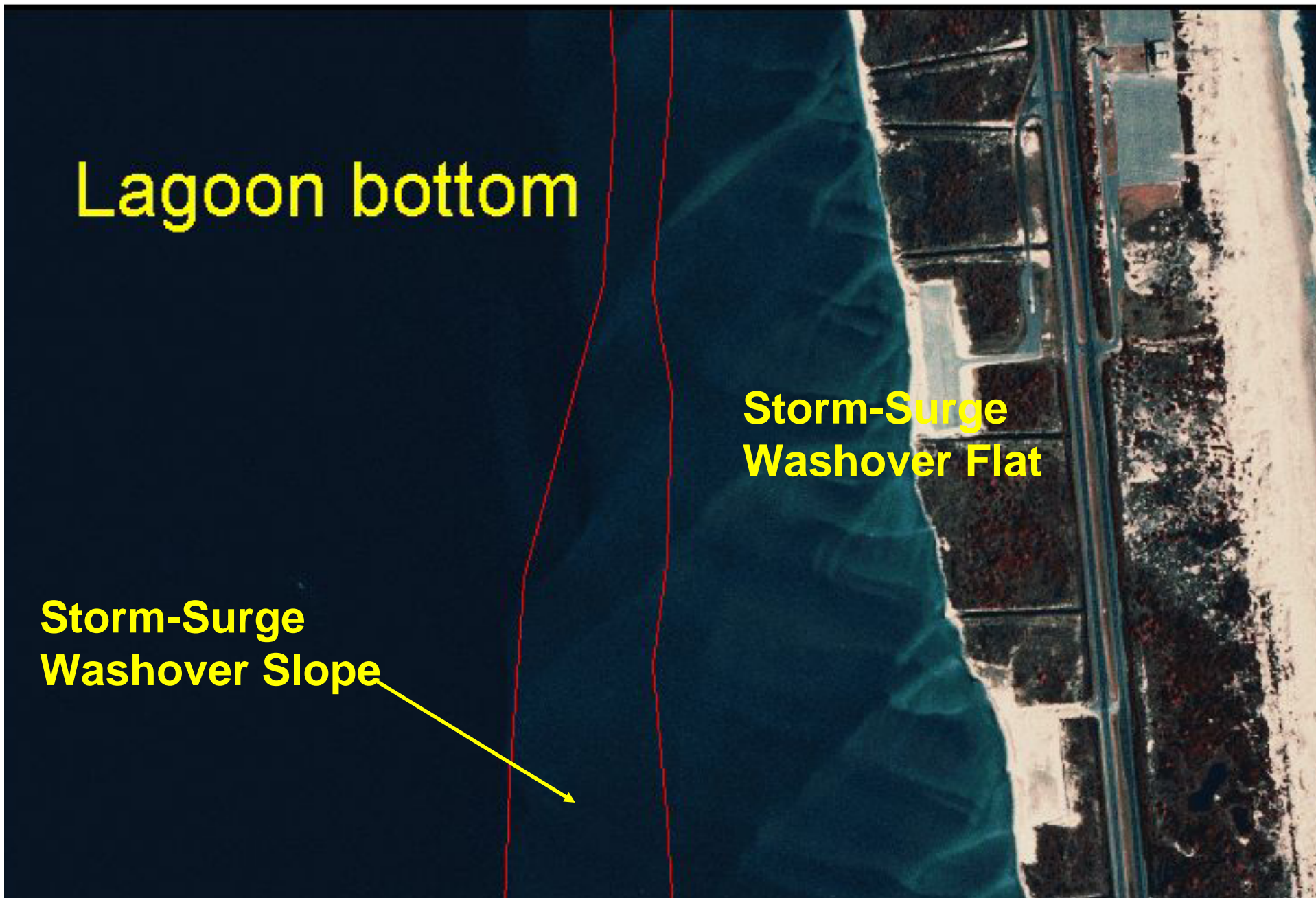




**Lagoon bottom**

**Storm-Surge  
Washover Flat**

**Storm-Surge  
Washover Slope**







**Storm-Surge  
Washover Flat  
and Slope**

This is an aerial photograph of a coastal environment. A yellow line is drawn across the image, starting from the top left, curving through a dark green, marshy area, and ending near a small, rectangular structure on the right. The landscape features a mix of dark green vegetation, lighter green areas, and patches of reddish-brown soil or sand. The overall scene suggests a coastal wetland or marsh area.



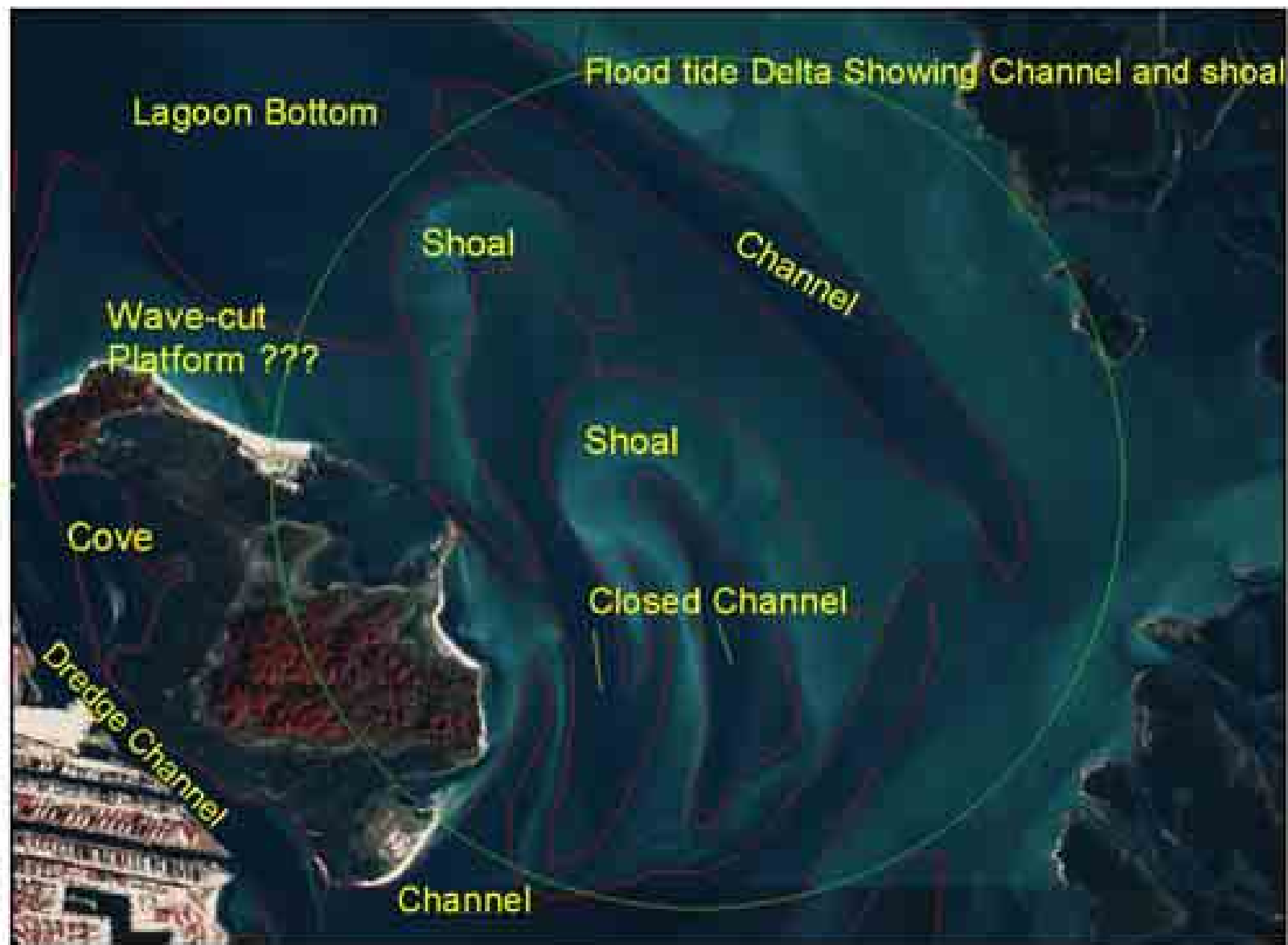
**Lagoon Bottom**



**Mainland Coves**







Flood tide delta



