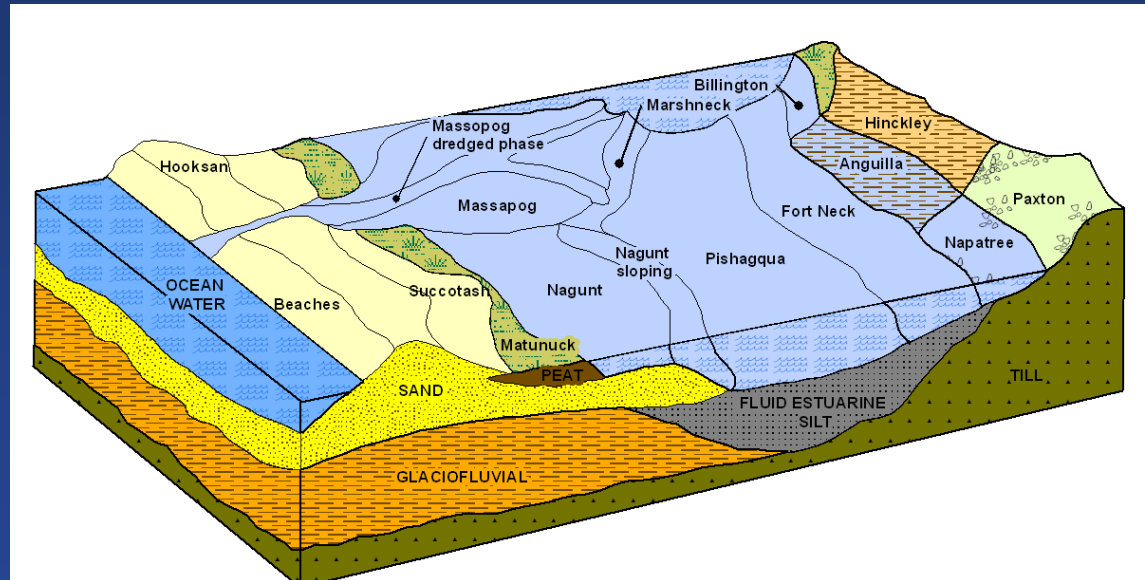


# NRCS Updates in RI, CT, and MA.



Donald Parizek and Maggie Payne

# National

- Re-organization to MLRA completed.
- Complete all lands (private and Fed).
- RCA and ESD are high priority.
- Next up “Harmonization” of surveys/data.
- Global soil web / classification.
- WSS 2.3 is out.
- eBook format for SS documents.
- Apps for pedon descriptions.
- Improve technical info, training, etc. using multimedia.
- Info at [www.soils.usda.gov](http://www.soils.usda.gov)

## Web Soil Survey 2.3 – New Features

### Web Soil Survey URLs

Web Soil Survey now allows you to save your AOI as a Web Soil Survey URL. This means you can create an AOI, and then bookmark it for later use.

Your URL also saves the particular view to which you've zoomed the map. You can even edit the URL to mark a particular location with a location marker:

- Create an AOI using one of the AOI map tools.
- Open the **Link** control by clicking **Link** in the Navigation Bar.
- The link records your AOI (if set) and the location you've zoomed to.
- Copy and paste the link, or right-click it to *Add to Favorites...* or *Bookmark this Link*.

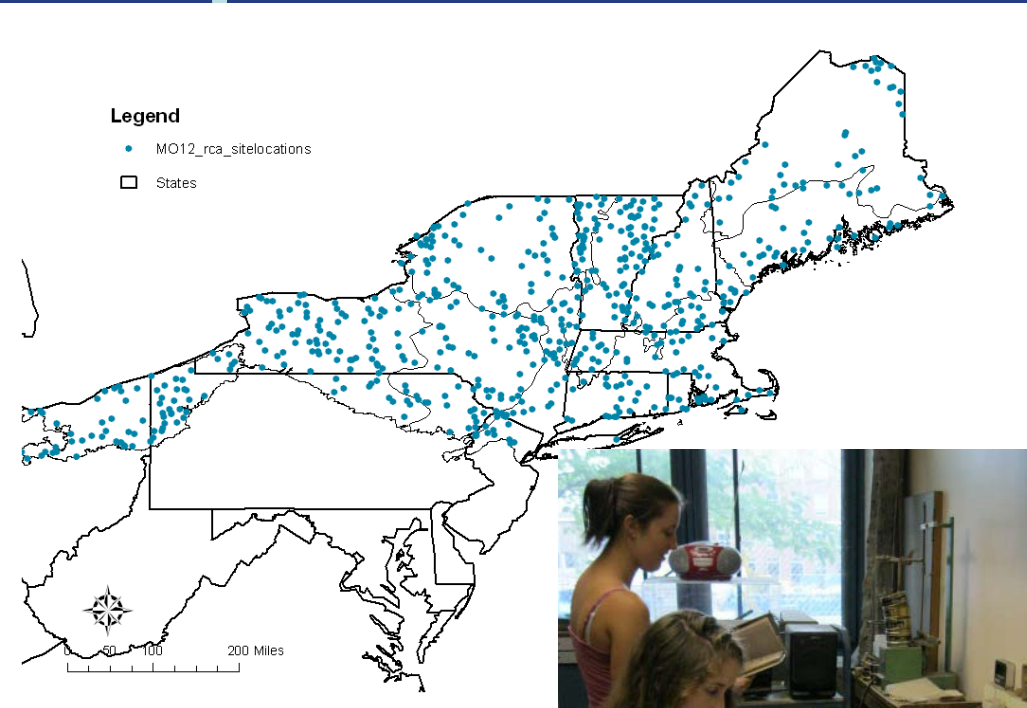
To add a location marker, see the Help in the **Link** control.

The screenshot displays the Web Soil Survey 2.3 web application. At the top, there is a navigation bar with links for 'Contact Us', 'Download Soils Data', 'Archived Soil Surveys', 'Soil Survey Status', 'Glossary', 'Preferences', 'Link', 'Logout', and 'Help'. Below the navigation bar, a 'Link' control window is open, showing a long URL that includes AOI coordinates and a location marker. The URL is: `http://WebSoilSurvey.NRCS.USDA.GOV/app/WebSoilSurvey.aspx?aoicoords={{(-95.07175%2042.35516,-95.07222%2042.33301,-95.06689%2042.33304,-95.06693%2042.33687,-95.06229%2042.33689,-95.06203%2042.35514,-95.07175%2042.35516)}}&location={{(-95.07201%2042.34013,-95.0611%2042.3354)}&marker={{(-95.06655%2042.33775)}}`. Below the URL, there are 'Close' and 'Copy' buttons. In the background, a map is visible with a green AOI boundary and a location marker. The map interface includes a 'Shopping Cart (Free)' button, a 'View Extent' button, and a 'Scale' control.

## New Improvements to WSS

- Send map as URL
- Upload /export AIO shape file.
- Better areial base (Bing Imagery coming).
- Quick Navigations.
- Block Diagrams.

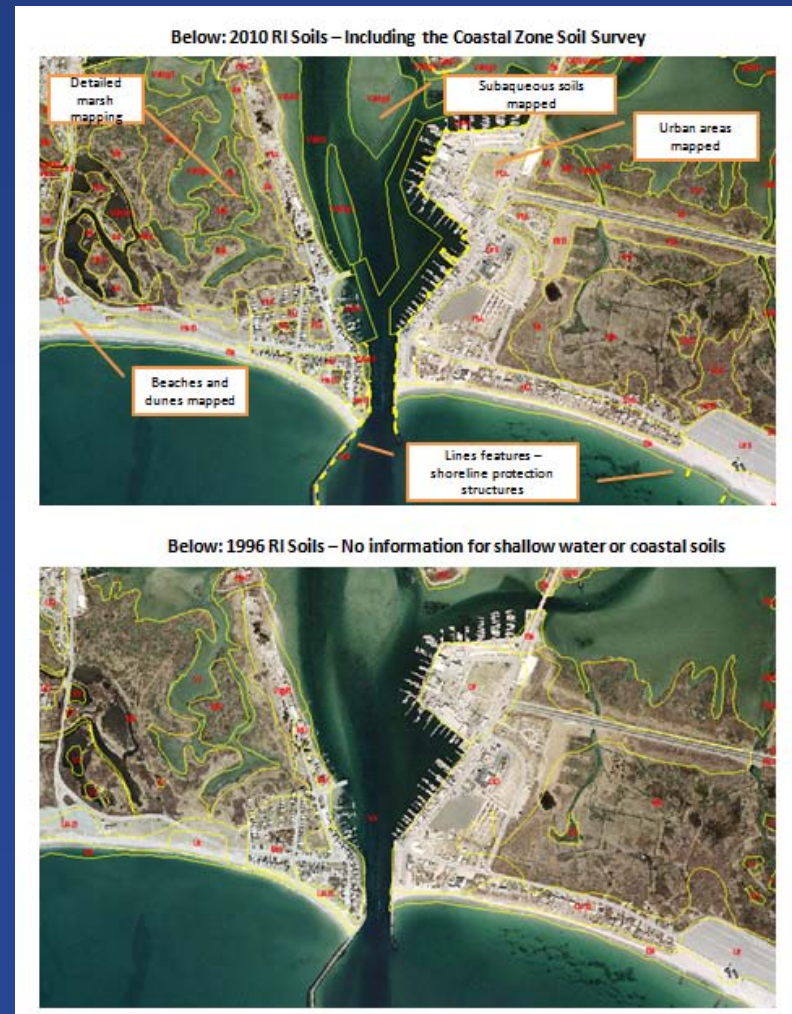
# Rapid Carbon Assessment (RaCA)



- National initiative to determine carbon levels in soils based on land use and soil type.
- Completed sampling of 379 locations, 1895 pedons.
- Lab analysis continuing at URI
  - Spectrometer carbon estimates and bulk density measurements
  - deadline March 2012

# RI NRCS Soil Program

- Staff: Jim Turenne – ASSS, Maggie RSS in charge of TSS, Jill Phillips – SS Temp working on RCA.
- Completed Phase I or the RI CZSS – 1<sup>st</sup> example of a SSURGO subaqueous soil map! Working on Phase II. →
- Completed joins with MA and CT.
- On-going spatial edits plan each year to update spatial data based on new imagery, Lidar and long range plan items.
- Sent Co and Aa back to MN now Freetown and Swansea are our Histosols.
- Freshwater mapping coming next upload!



# Fixing the Spatial Shift



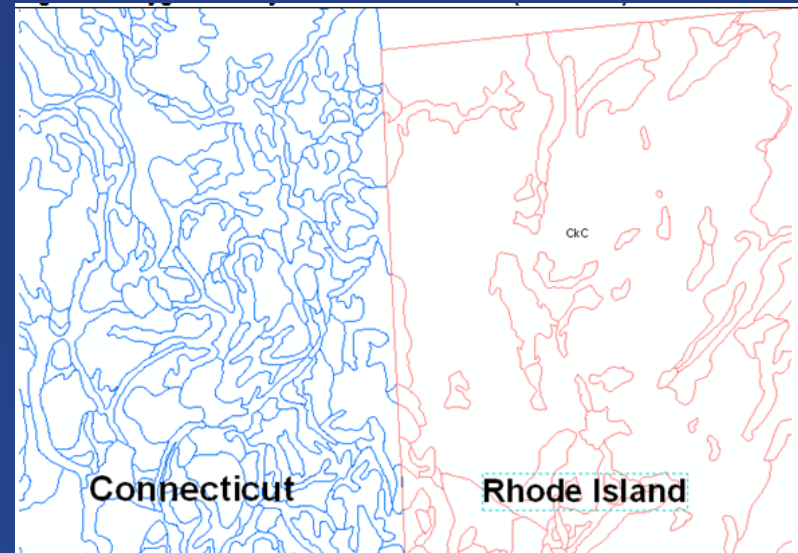
## Current Spatial

## Updated Spatial

Original digitization was pre-ortho imagery so base map used for hydro was topo – this caused a spatial shift when projected on Orthophotos – this is being corrected in new updates for RI.

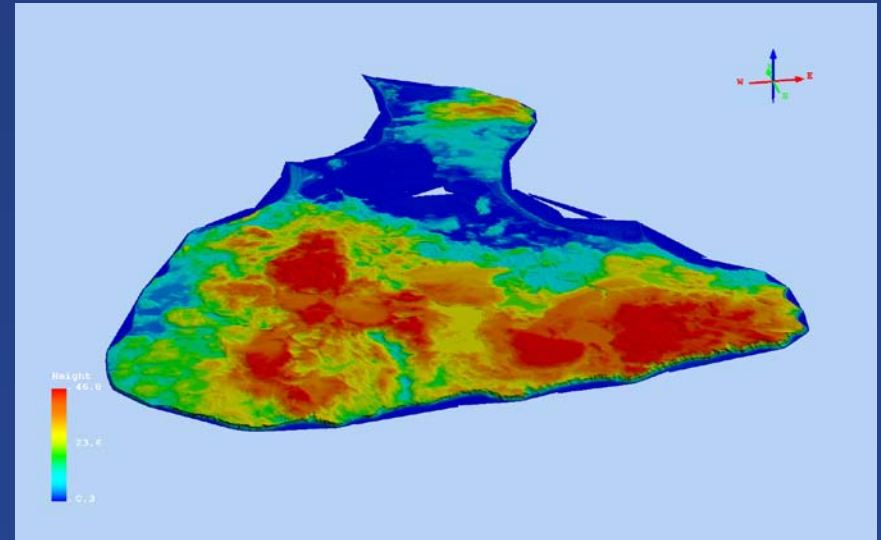
# Other enhancements

- Re-map of NW hills scheduled for this year (Order 3? Mapping). →
- Removal of tiny polygons (water units) only units > .5 ac.
- Urban updates – bring in HTM units, Urbanland –till substratum, urban flooding, etc.
- Re-map of Prime/SI important farmland that are no longer. →
- Bedrock components to Newport-Pittstown units.
- NASIS data improvements.
- Work Planning Conference this winter .



# RI (SNE) resource data.

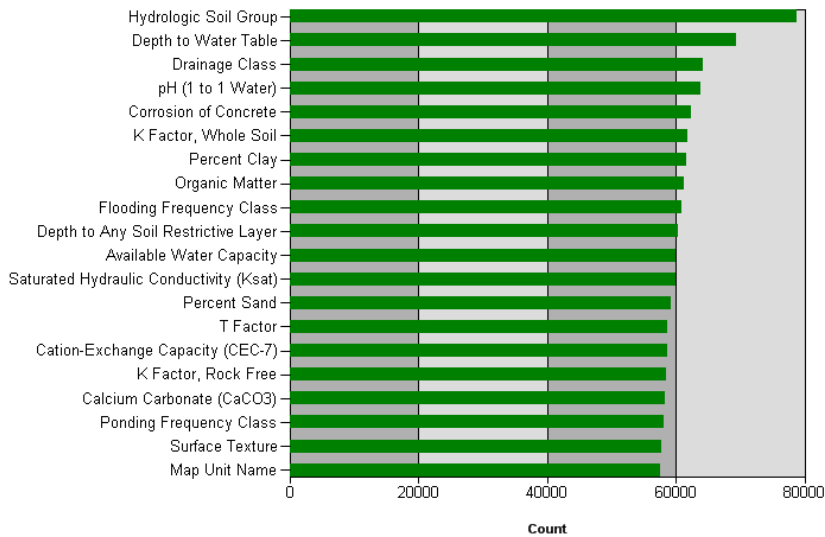
- State-wide Lidar now available – 1m with 15 cm vert. accuracy (also for areas of CT/SE MA)!
- All historic imagery (1939 and on) now geo-registered – visit [www.arcgis.com](http://www.arcgis.com) for maps.
- All Historic USGS topos and Surficial geology maps now geo-registered.
- 4 in (psedo) orthos 2008 and 2011  
4 Band 6 in orthos coming out.
- State-wide Pictometry.
- All previous RI soil surveys registered and online.
- Google Maps and SoilWeb app include updated RI soils.



# Usages /Stats on Ratings FY 2011 WSS and SDM

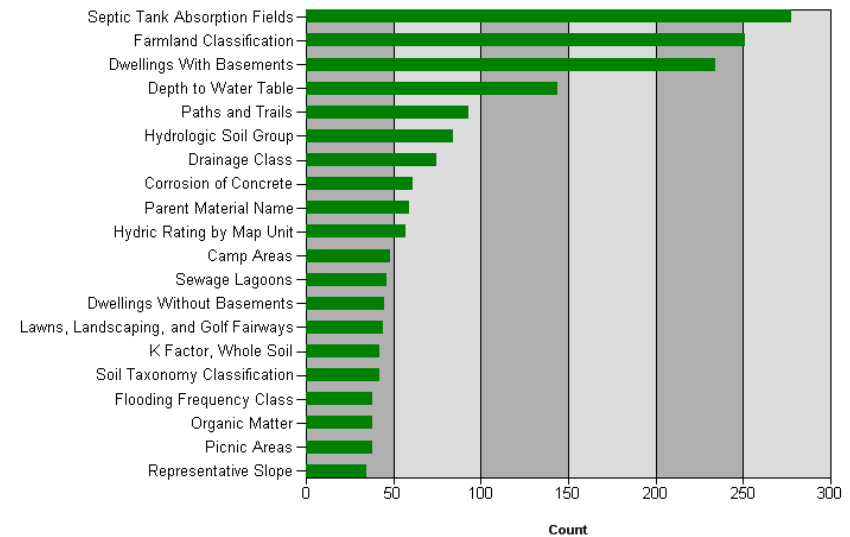
## National

Usage of Ratings (Top 20)



## Rhode Island

Usage of Ratings (Top 20)





# MA NRCS

- State Soil Survey and MO-12.
- Staffing:
  - Dave Hvizdak SSS/MO
  - Shawn Finn SSDQS
  - David Clausnitzer ESD
  - Kristina Wiley Editor
  - Al Averill ASSS
  - Glen Stanisewski RSS

## Projects

- Completed Plymouth Soil Survey!
- Working on Franklin County
- Technical Soil Services (Glen east, Al west)
- Ecologic Site Descriptions
- MO-12 region
- Newsletter for all updates in region:  
<http://www.ma.nrcs.usda.gov/neasoils/mo12newsletter.html>