

Plymouth County Soil Survey Update (Extensive Revision)

It's Done*!

* Pending SSURGO certification, final correlation document signatures, and staging server operation

PCCD Soil Survey Assistance

- Ground Penetrating Radar Investigations
- Title V Workshops
- Hydric Soil Workshops
- Basic Soil Services
- Soil Survey Contract Mapping
- Soil Tunnel Educational Display

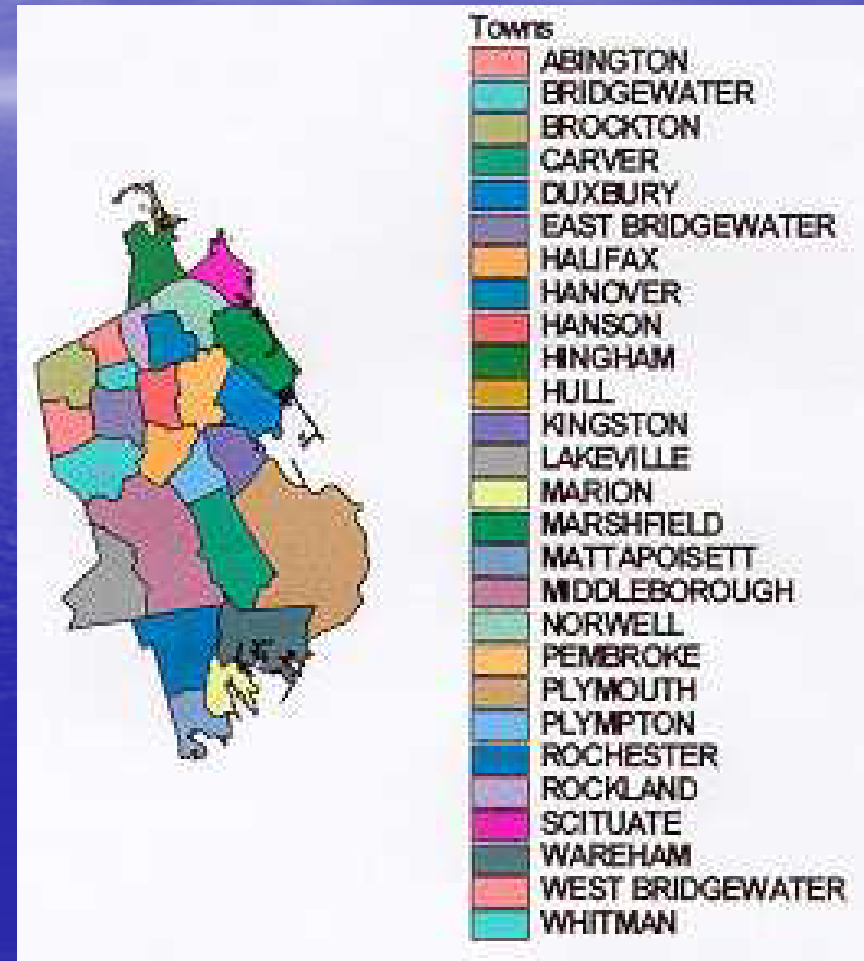
PCCD Update Mapping Contract

- 39,002 acres mapped through this contract
- ~ \$1 / acre
- 4 PCCD Contract mappers

- Thank You!

Plymouth County Soil Survey

- Size: 425,000 acres
- MLRA's: 149B & 144A
- Scale: 1:12,000
- Minimum Size Delin. 1/2 acre
- 34,347 soil polygons
- 7,993 Special spot features
- 545 Special line features



What's the Difference

1969 Plymouth

- Scale 1:15,840(MSD~2.5)
- Gloucester Soil acreage = 35,550
- Field work 1950-1963
- Sb = Sanded muck / bog
- Urban areas unclassified
- 106 mapunits

2010 Plymouth

- Scale 1:12,000(MSD~0.5)
- Gloucester Soil Acres = 2,875
- Field work 1989-2009
- Soil Series names on cranberry beds
- Urban areas classified as high as possible to series
- 6 New Soil Series, 9 Dropped
- Georeferenced sites
- 254 mapunits

Field Mapping Imagery

- Flown in Spring 1993 (leaf off)
- High Resolution
- Un - rectified CIR
- Increase Accuracy

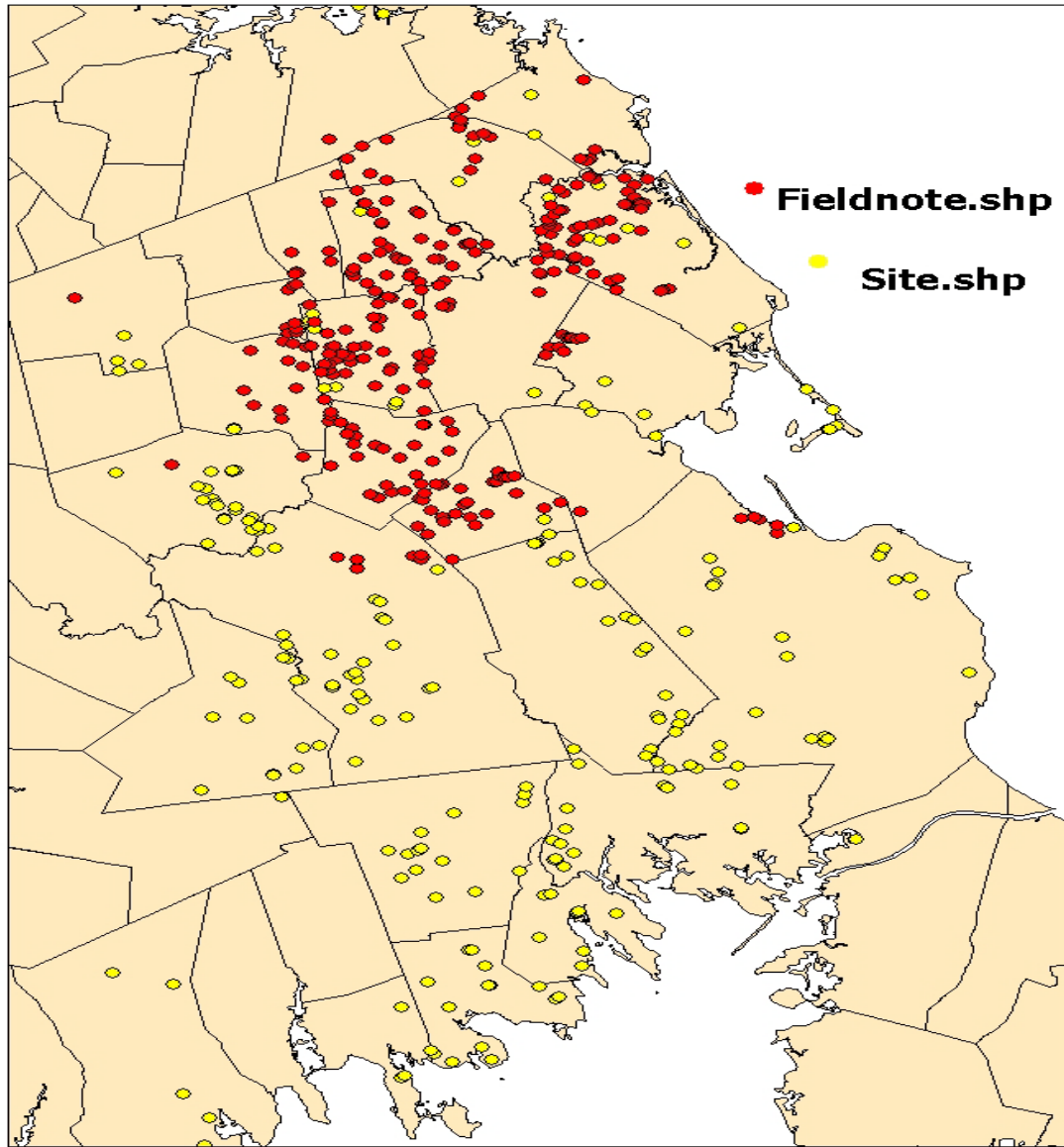


1969 Field Mapping

- Black & White 1952 imagery



- Final Acre Ceremony (Who, What, Where, When, and Why)
- Would like to request PCCD support along with Pilgrim RC&D
- Website to support the Soil Data Mart and Web Soil Survey product
- Thank you!



Title 5 - Soil Evaluator Workshops (PCCD)

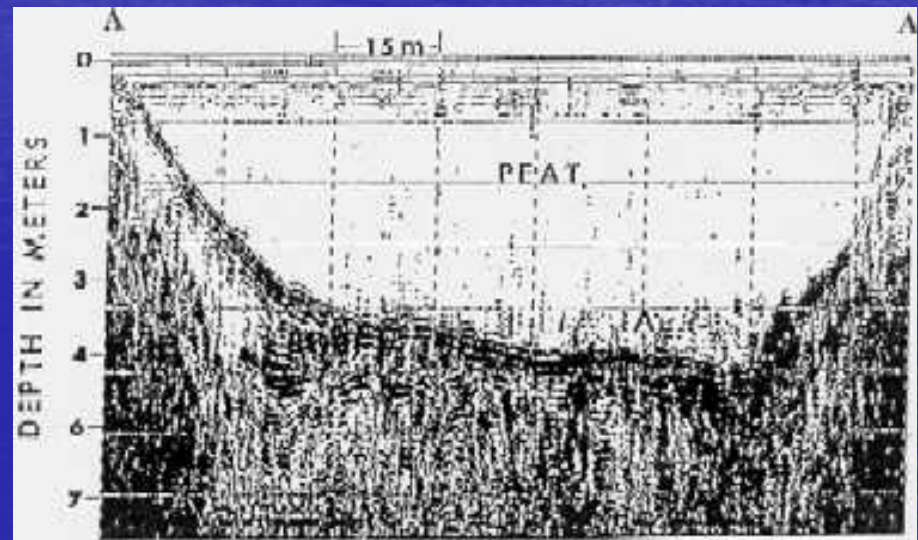


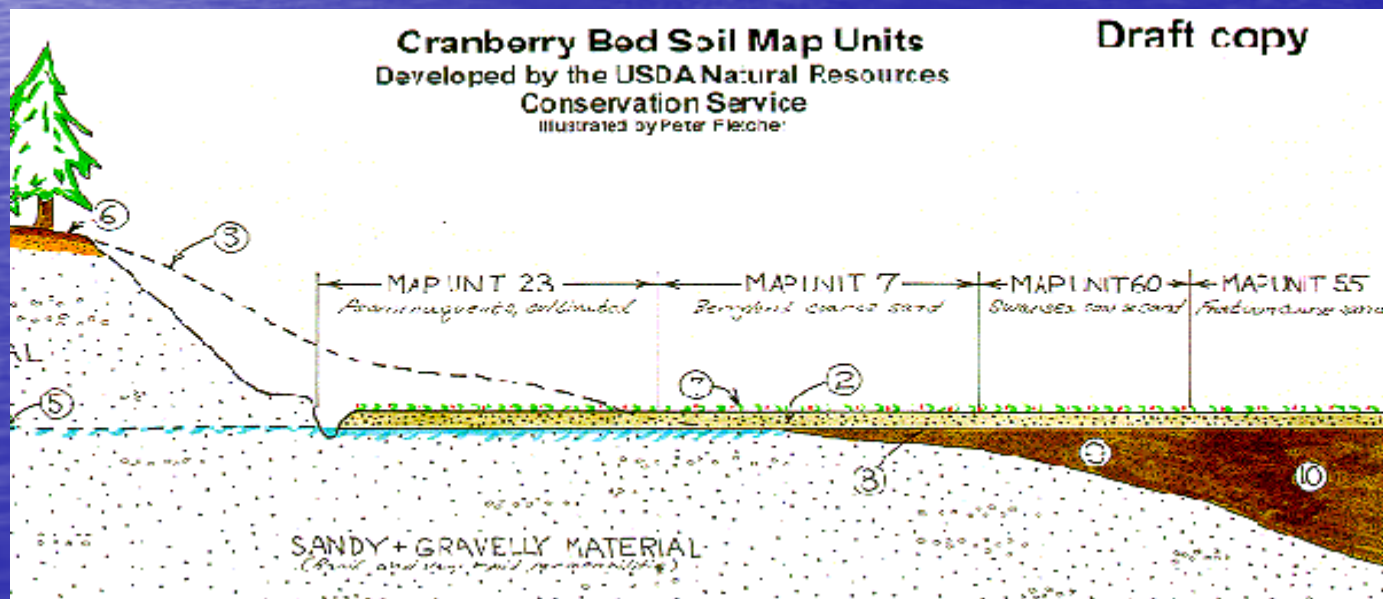
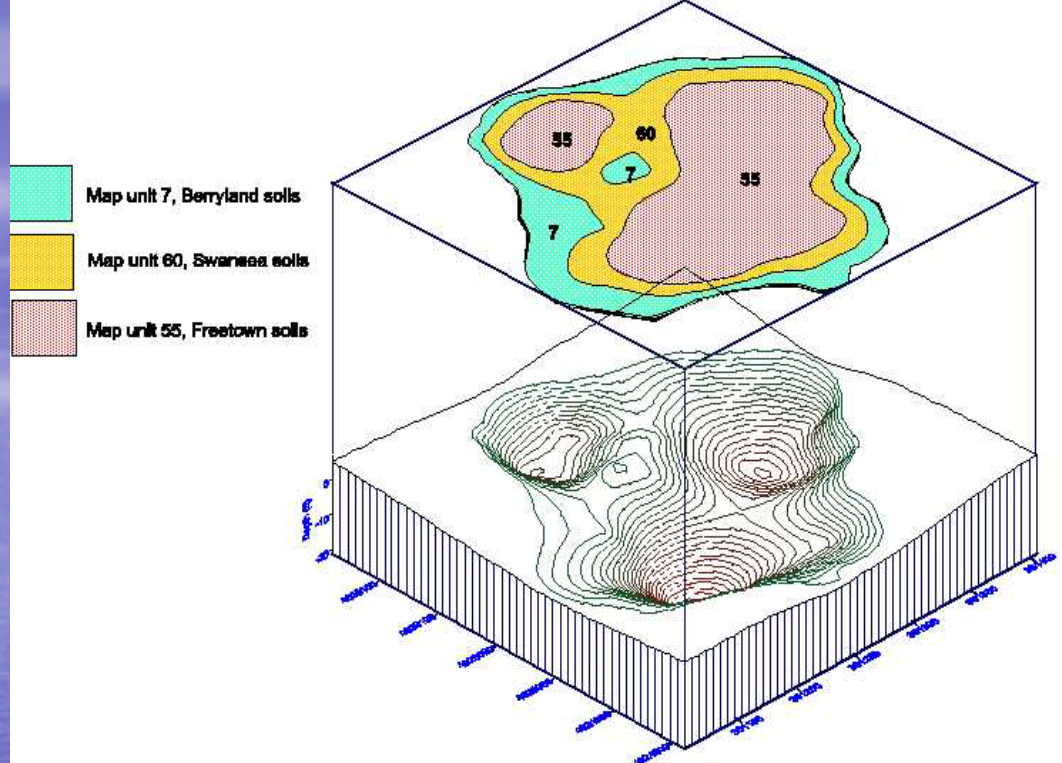
Hydric Soil Workshops (PCCD)

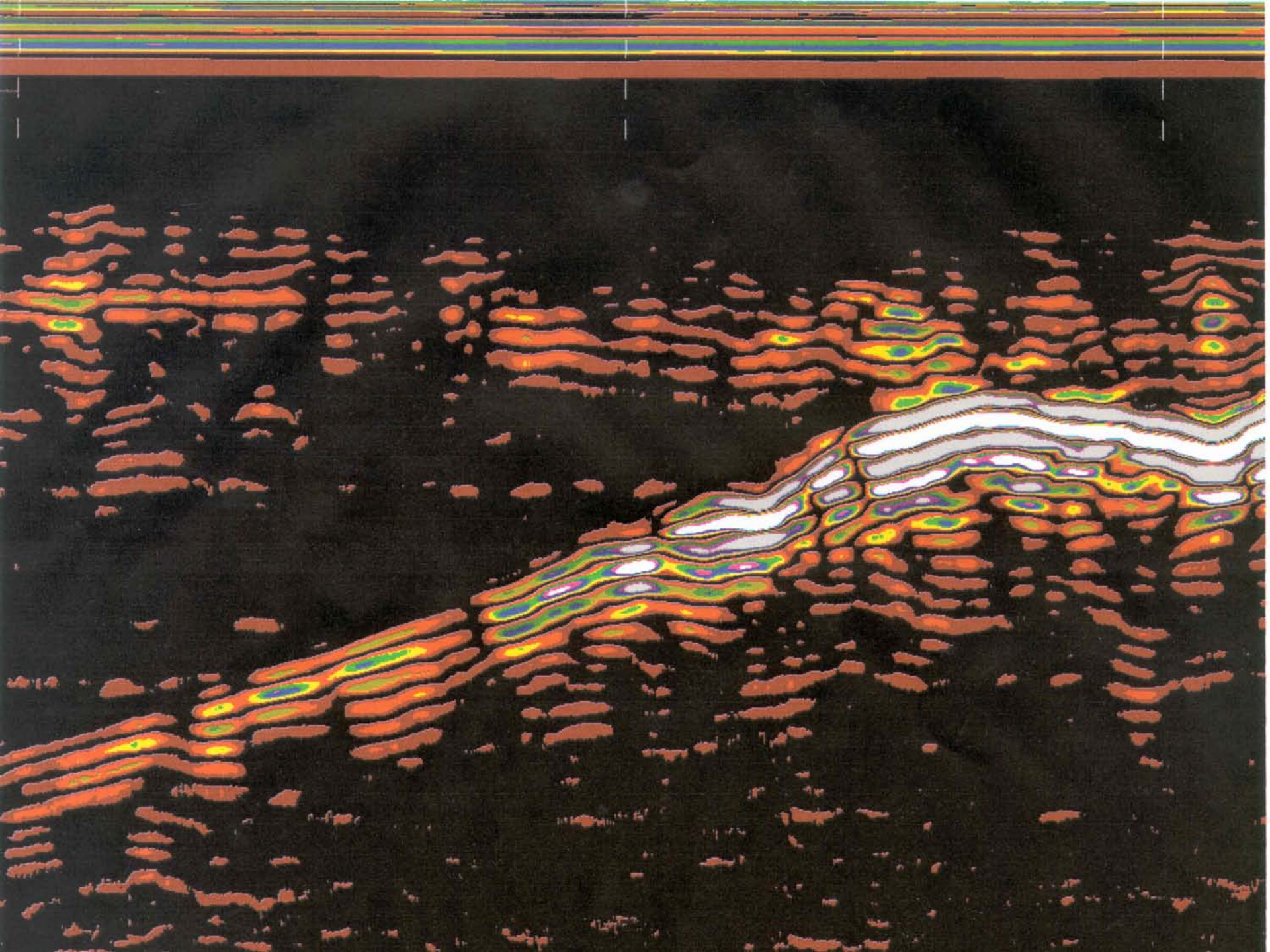


Ground Penetrating Radar Soil Investigations

Peat Mapping on Cranberry Beds







GPR - 2D - Peat Thickness

