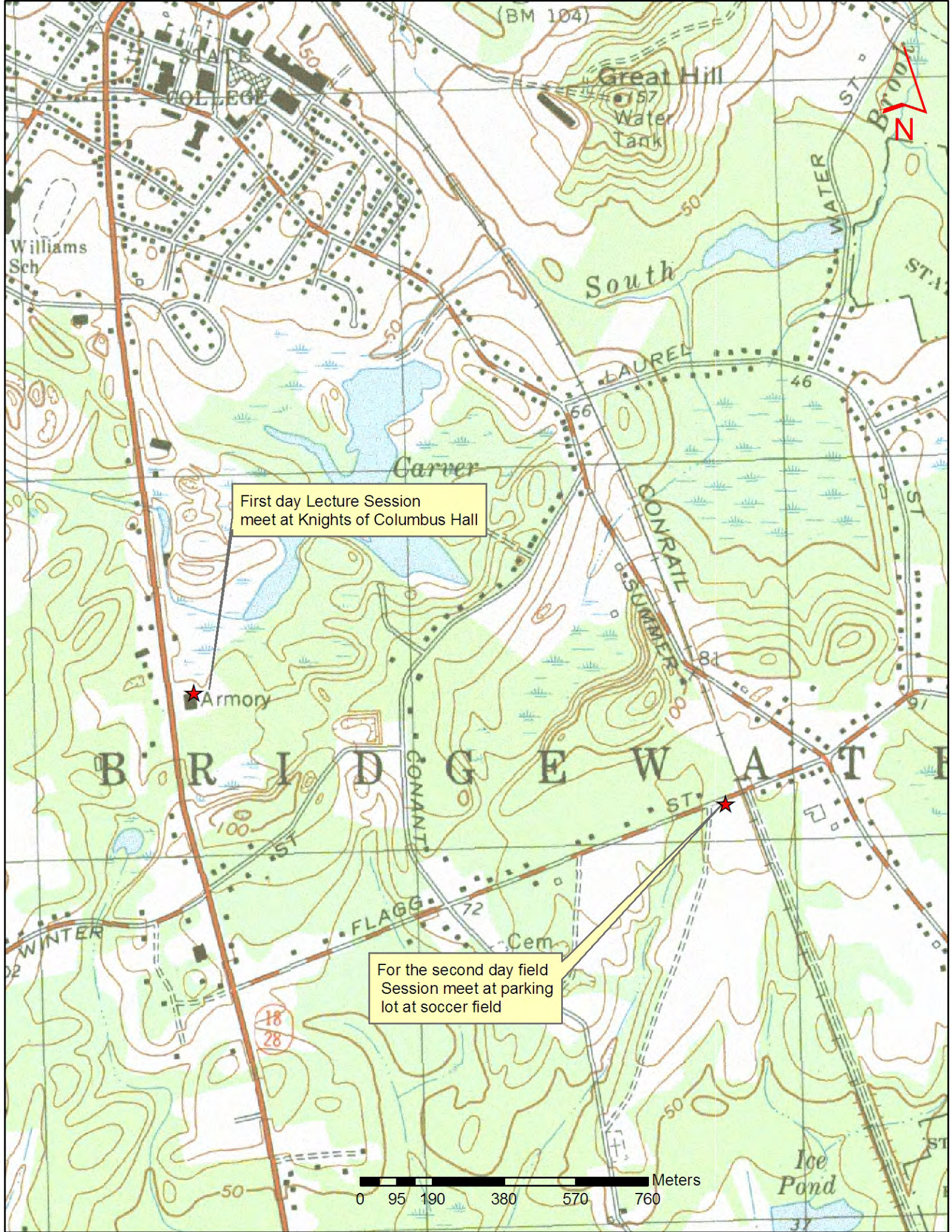


**Bridgewater Soil Evaluators Reference Maps Table of Contents:**

**All maps made using MassGIS data – visit: <http://www.mass.gov/mgis/massgis.htm>**

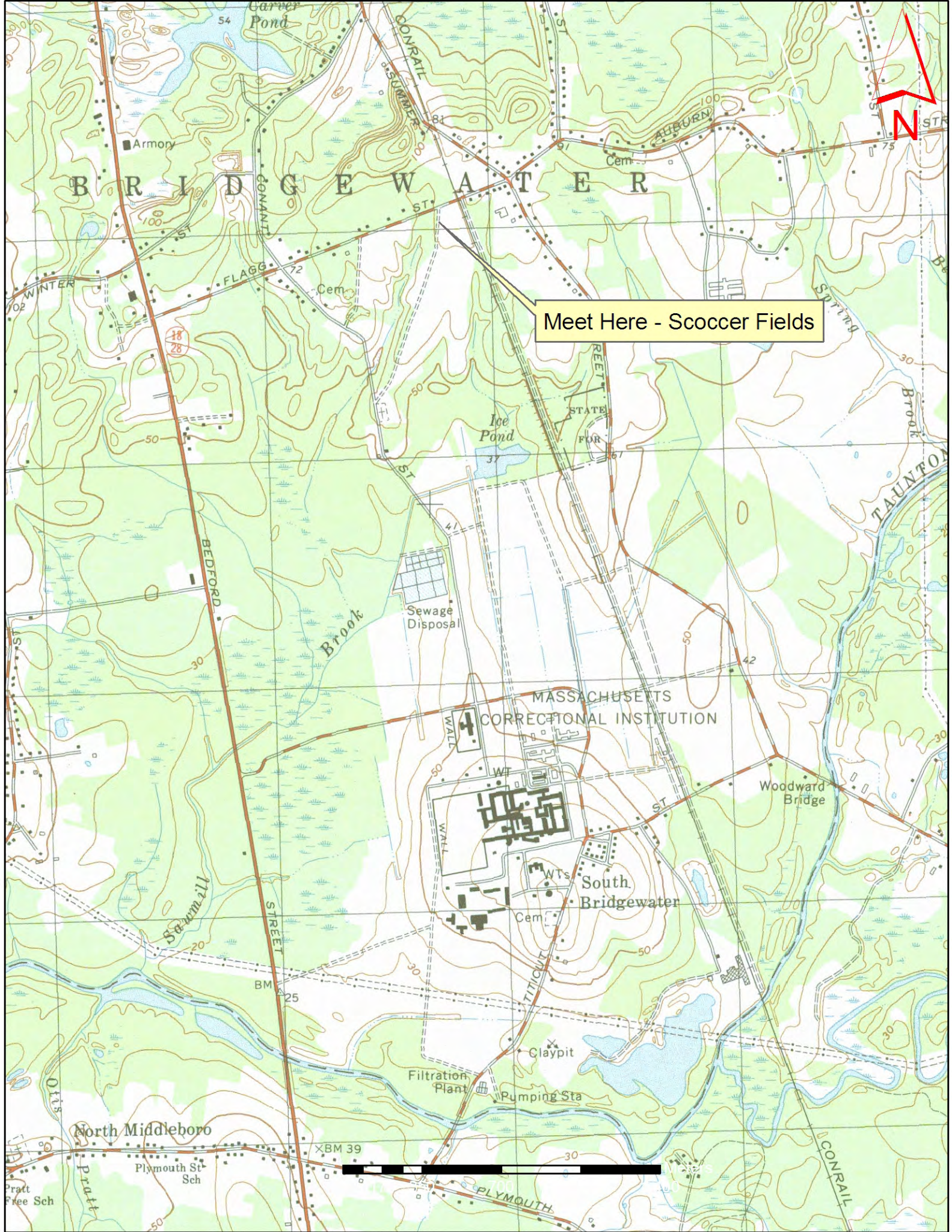
- Page 2 – USGS Topo Quad, 1:12,000 Scale with meeting locations
- Page 3 - USGS Topo Quad, 1:20,000 Scale with field meeting locations
- Page 4 - USGS Topo Quad, 1:13,000 Scale with field sites 1-3
- Page 5 – 2008 Ortho Photo with field sites 1:13,000 scale
- Page 6 – DEP Wetlands overlaid on 2001 Ortho at 1:13,000 scale
- Page 7 – Title V setbacks 1:13,000
- Page 8 – NWI Wetlands 1:13,000 scale
- Page 9 – FEMA Q3 FloodZones 1:13,000 scale
- Page 10 – Plymouth County Soil Survey UPDATE – see legend on last page 1:13,000
- Page 11 – Soil Parent Material Map 1:13,000
- Page 12 – Hydric Soils
- Page 13 - Plymouth County Soil Survey UPDATE SW sites– see legend on last page 1:13,000
- Page 14 – USGS Topo 1:10,000 scale with sites 4-7
- Page 15 – 2008 Orthophoto 1:10,000 scale
- Page 16 – DEP Wetlands 1:10,000 scale
- Page 17 – NWI Wetlands 1:10,000 scale
- Page 18 – FEMA Q3 Floodzones 1:10,000
- Page 19 – Title V Setbacks 1:10,000
- Page 20 – Plymouth County Soil Survey UPDATE 1:4,000 – see legend below
- Page 21 – Hydric soils map 1:4,000
- Page 22 – Soil Parent Material Map 1:4,000
- Page 23 – 2001 Ortho photo 1:10,000
- Page 24 – Soil Map Legend with Attribute tables.



First day Lecture Session  
meet at Knights of Columbus Hall

For the second day field  
Session meet at parking  
lot at soccer field

0 95 190 380 570 760 Meters



Meet Here - Soccer Fields

N

B R I D G E W A T E R

MASSACHUSETTS  
CORRECTIONAL INSTITUTION

South  
Bridgewater

North Middleboro

Pratt  
Free Sch

Plymouth St  
Sch

Filtration  
Plant

Pumping  
Sta

Claypit

Sewage  
Disposal

Ice  
Pond

B E D F O R D  
S T R E E T

S M A L L  
S T R E E T

W A L L  
S T R E E T

T I T I C U T  
S T R E E T

C O N R A I L

C O N R A I L

A L B U R N

T A U N T O N  
B R O O K

W I N T E R

A R M O R Y

C E M

C E M

S T A T E  
F U R

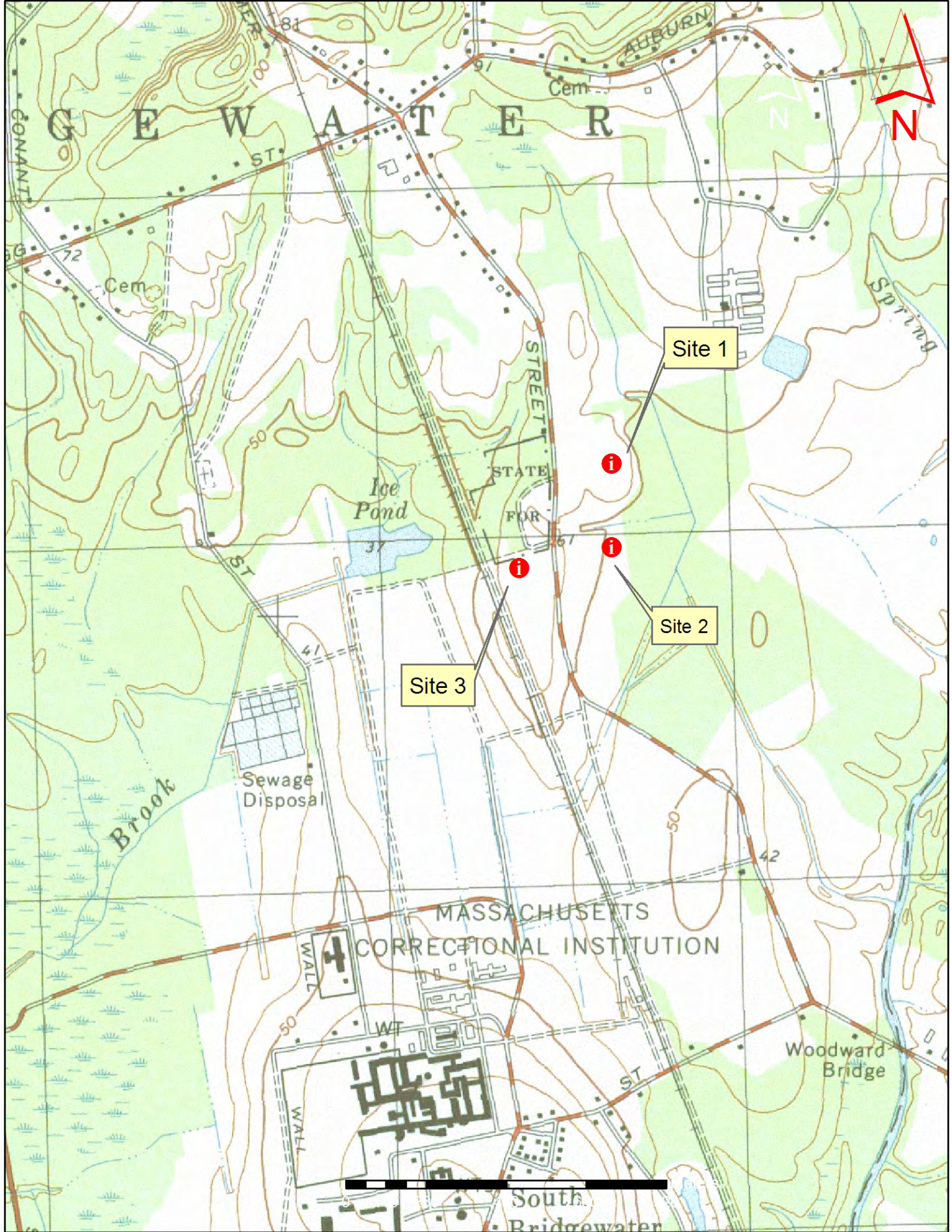
W o o d w a r d  
B r i d g e

18  
28

B M 25

X B M 39

P L Y M O U T H



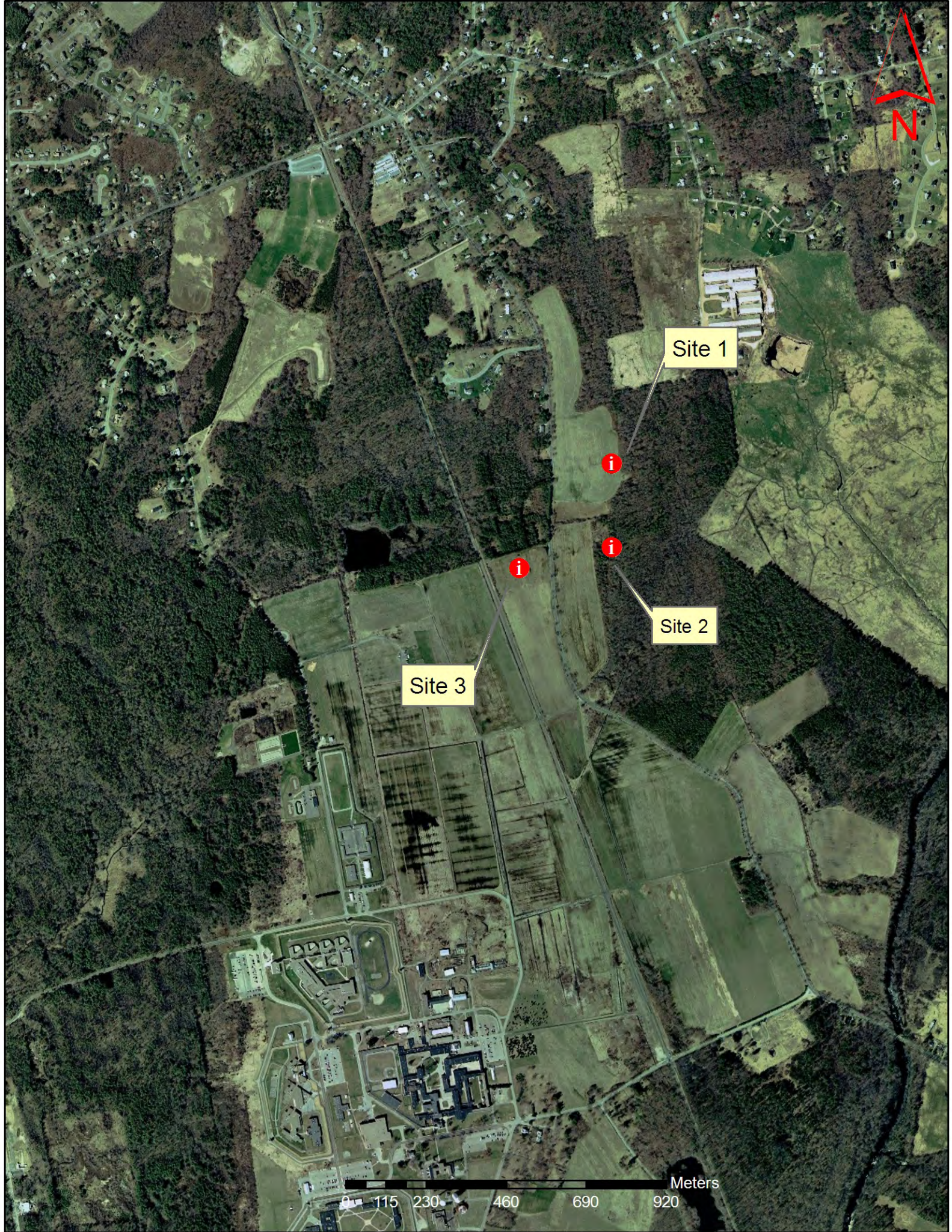
Site 1

Site 2

Site 3

MASSACHUSETTS  
CORRECTIONAL INSTITUTION

South  
Bridgewater



Site 1

i

i

i

Site 2

Site 3

Meters

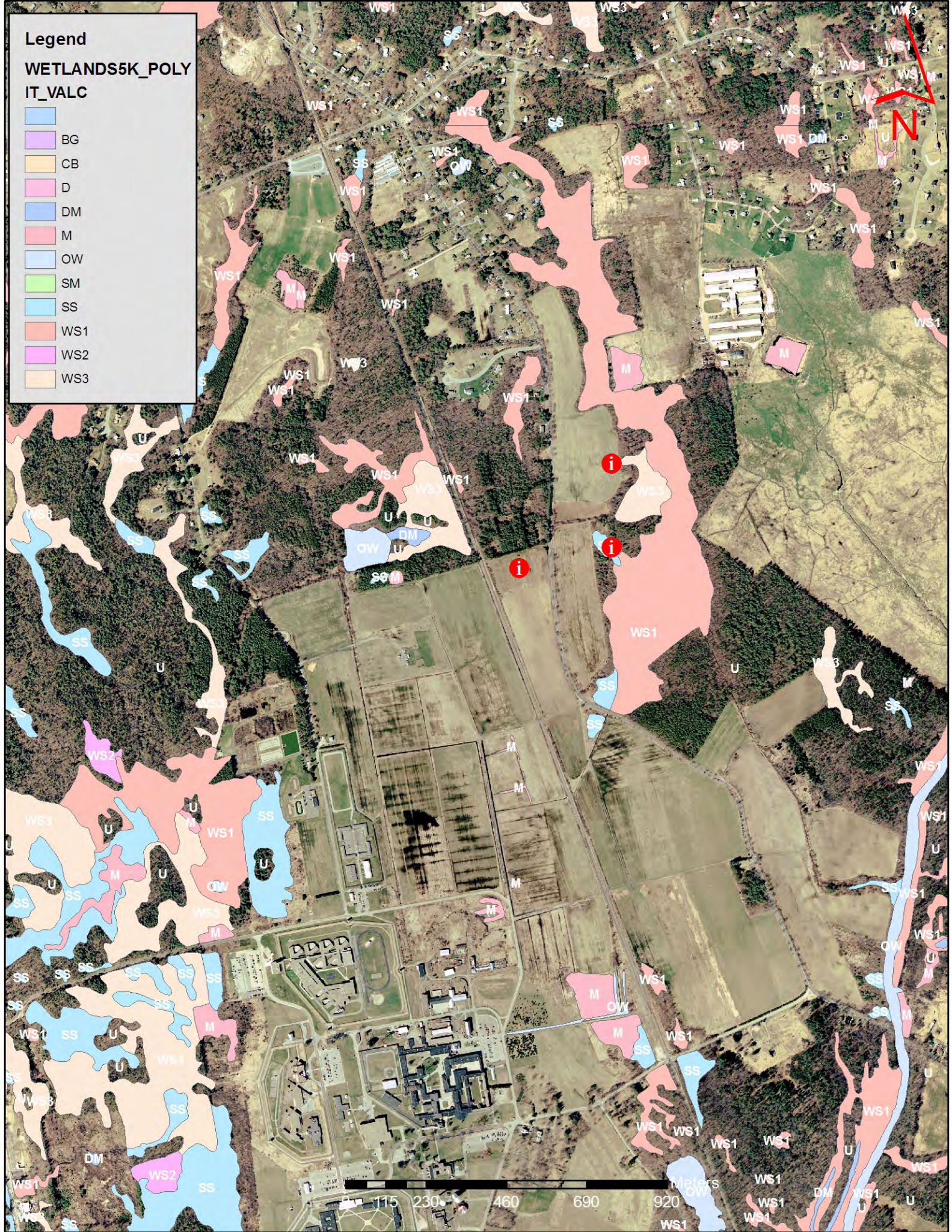
0 115 230 460 690 920

**Legend**


**WETLANDS5K\_POLY**

**IT\_VALC**

-  BG
-  CB
-  D
-  DM
-  M
-  OW
-  SM
-  SS
-  WS1
-  WS2
-  WS3



# Legend

 Inside Setback Area

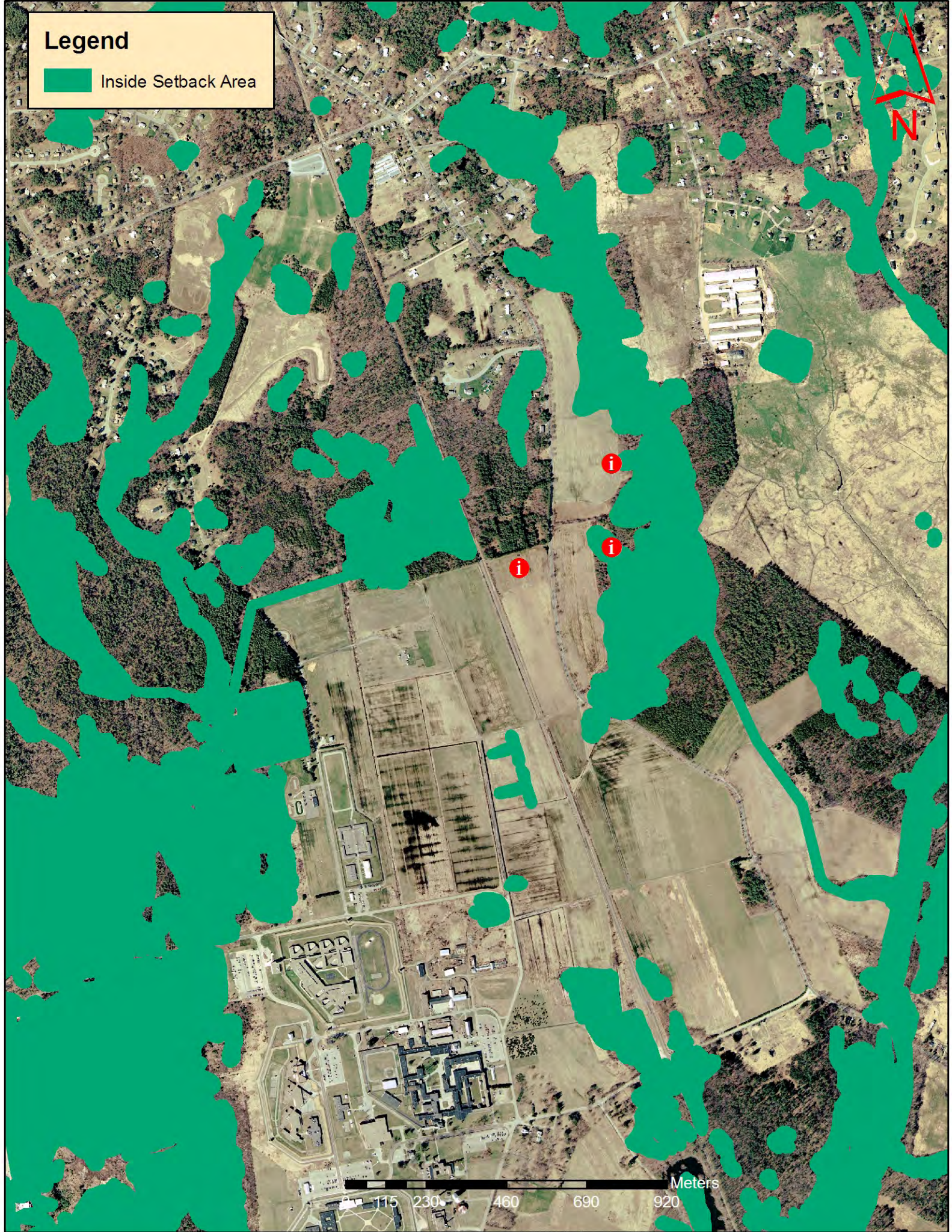


**i**

**i**

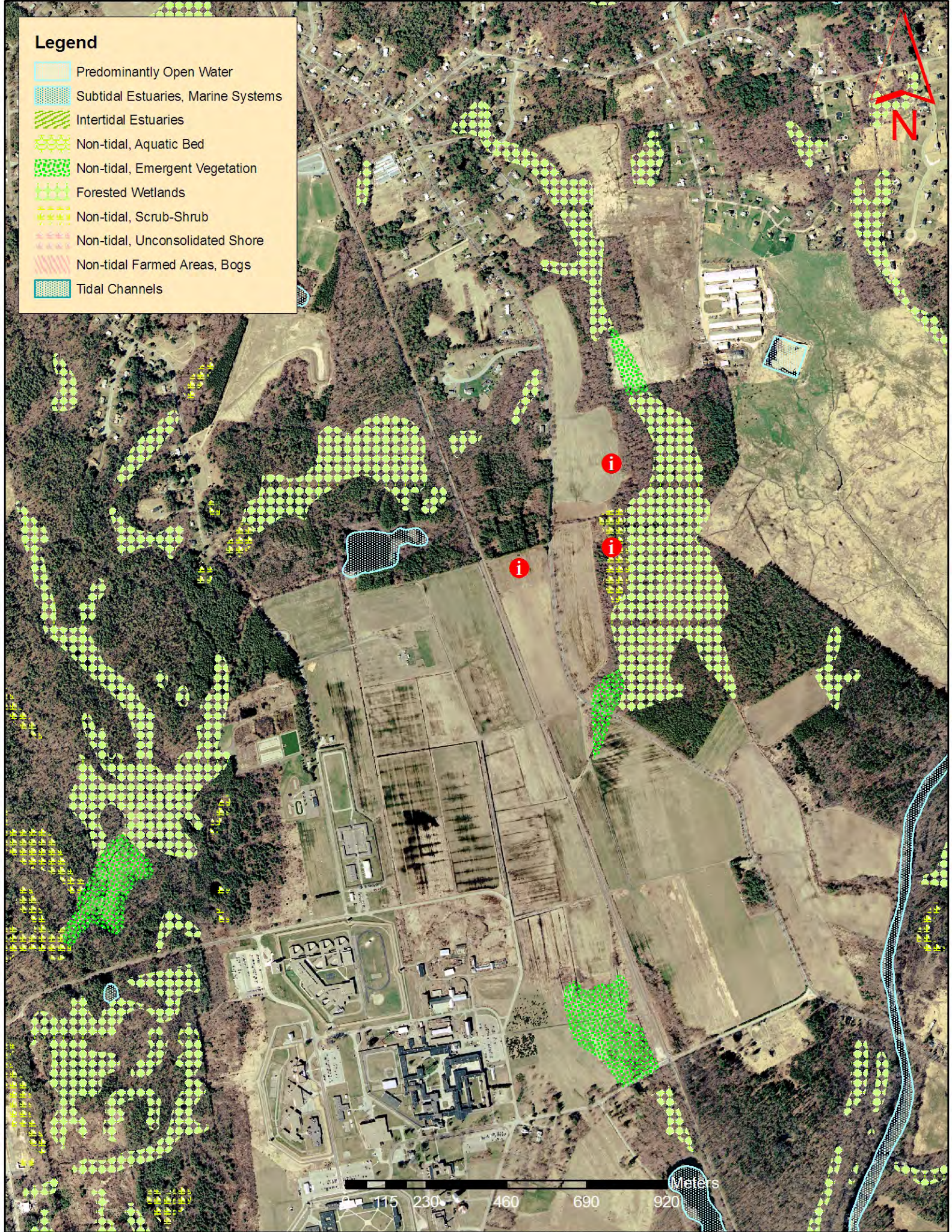
**i**

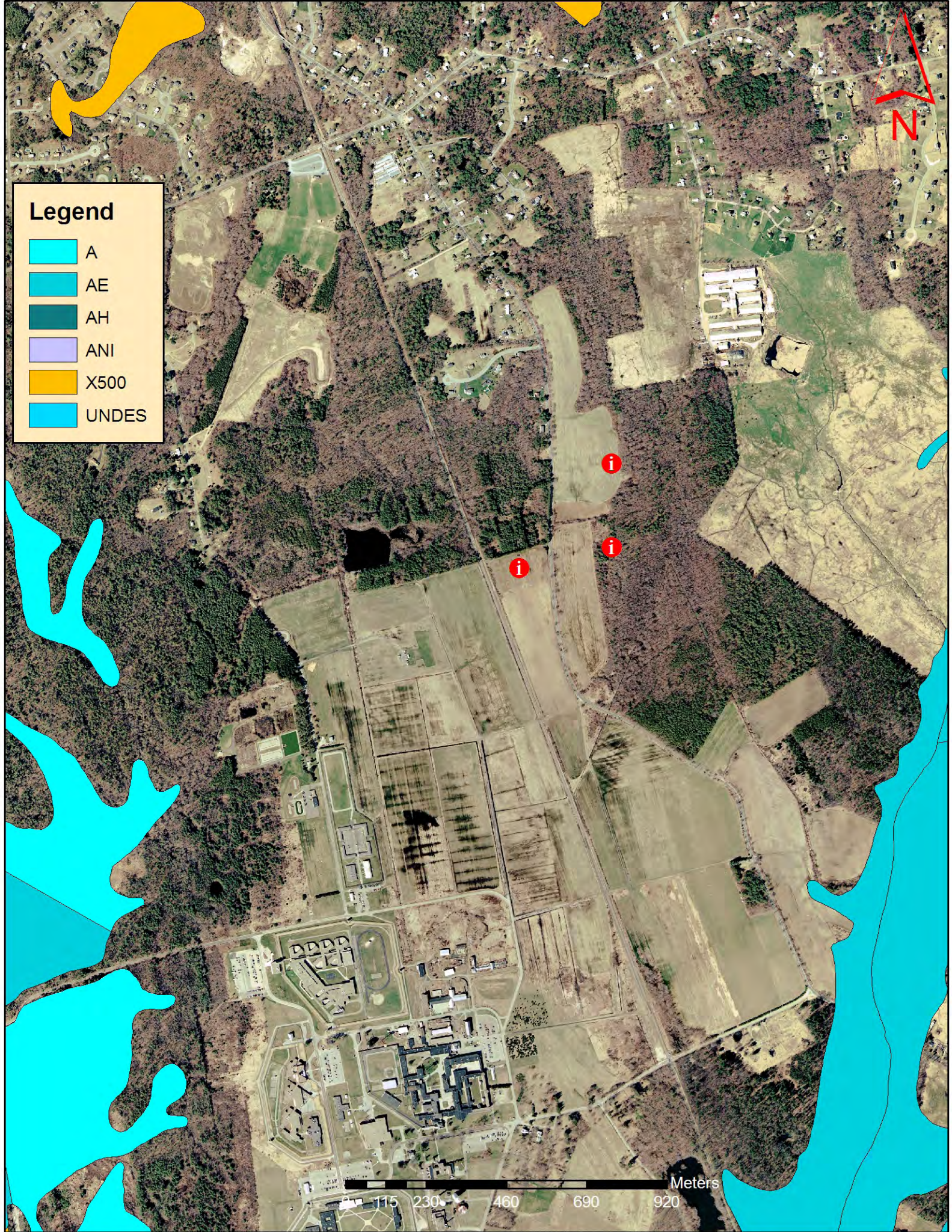
Meters  
115 230 460 690 920



# Legend

- Predominantly Open Water
- Subtidal Estuaries, Marine Systems
- Intertidal Estuaries
- Non-tidal, Aquatic Bed
- Non-tidal, Emergent Vegetation
- Forested Wetlands
- Non-tidal, Scrub-Shrub
- Non-tidal, Unconsolidated Shore
- Non-tidal Farmed Areas, Bogs
- Tidal Channels





### Legend

- A
- AE
- AH
- ANI
- X500
- UNDES

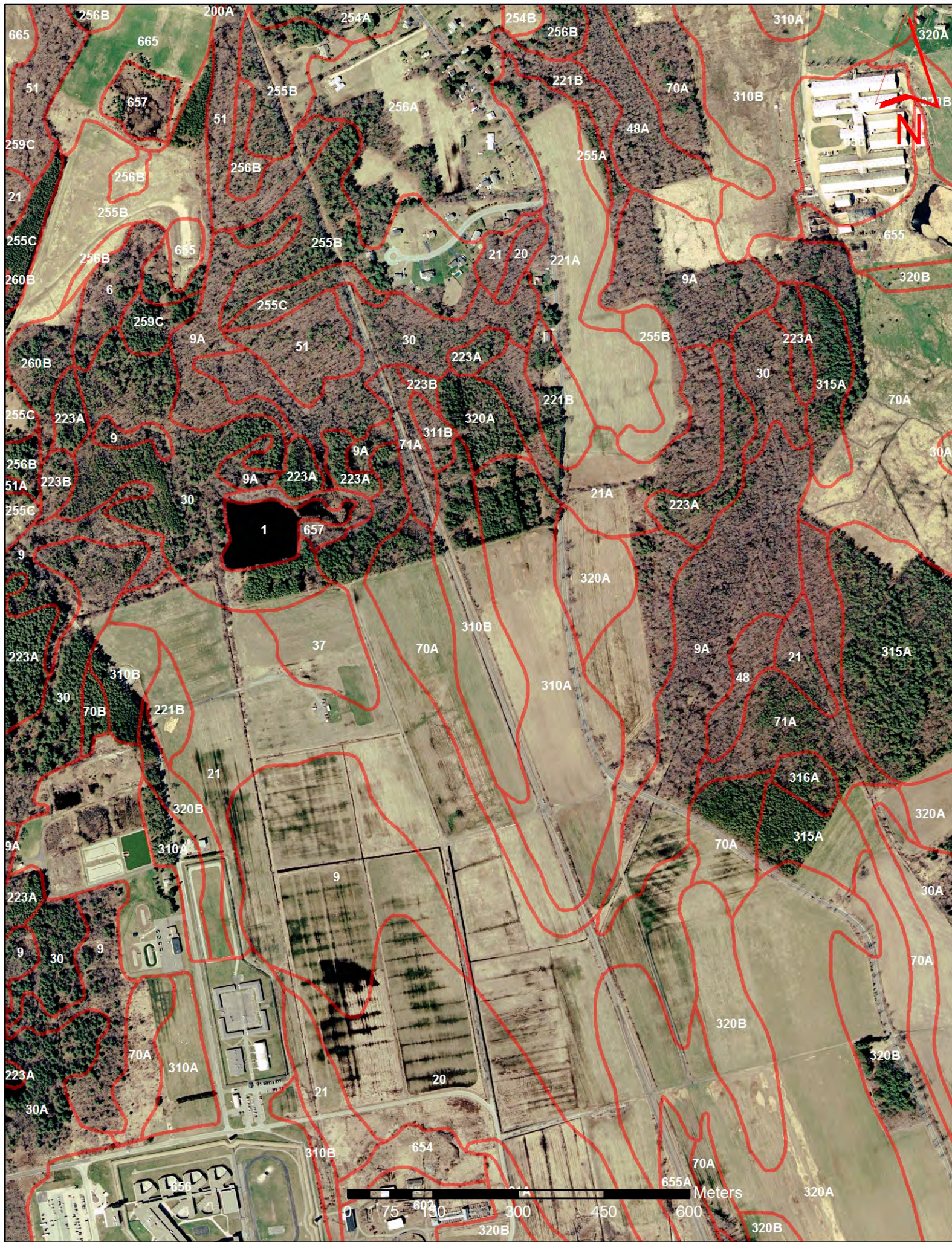
i

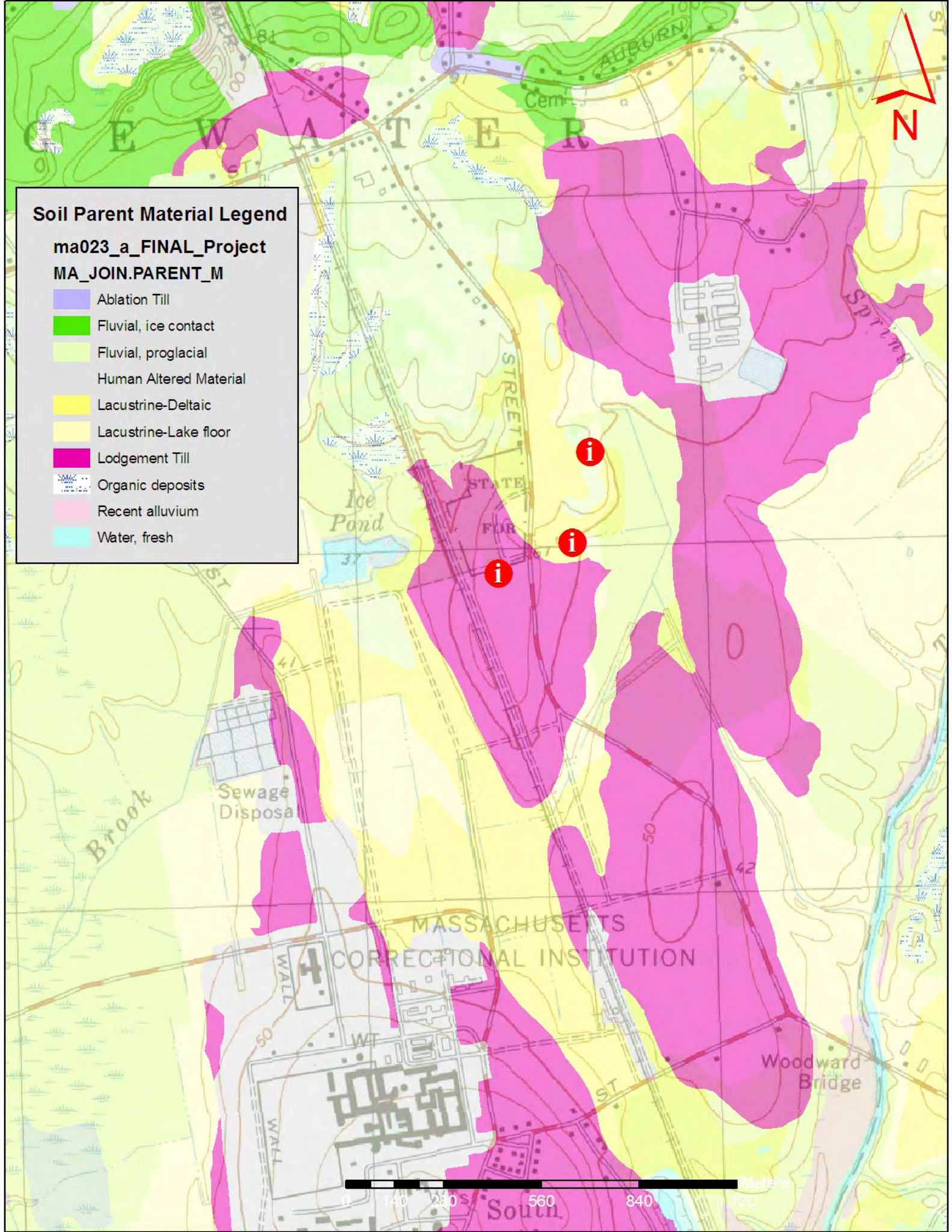
i

i

N

0 115 230 460 690 920 Meters





**Soil Parent Material Legend**

ma023\_a\_FINAL\_Project  
MA\_JOIN.PARENT\_M

- Ablation Till
- Fluvial, ice contact
- Fluvial, proglacial
- Human Altered Material
- Lacustrine-Deltaic
- Lacustrine-Lake floor
- Lodgement Till
- Organic deposits
- Recent alluvium
- Water, fresh



**Soil Parent Material Legend**

ma023\_a\_FINAL\_Project  
MA\_JOIN.PARENT\_M

- Ablation Till
- Fluvial, ice contact
- Fluvial, proglacial
- Human Altered Material
- Lacustrine-Deltaic
- Lacustrine-Lake floor
- Lodgement Till
- Organic deposits
- Recent alluvium
- Water, fresh

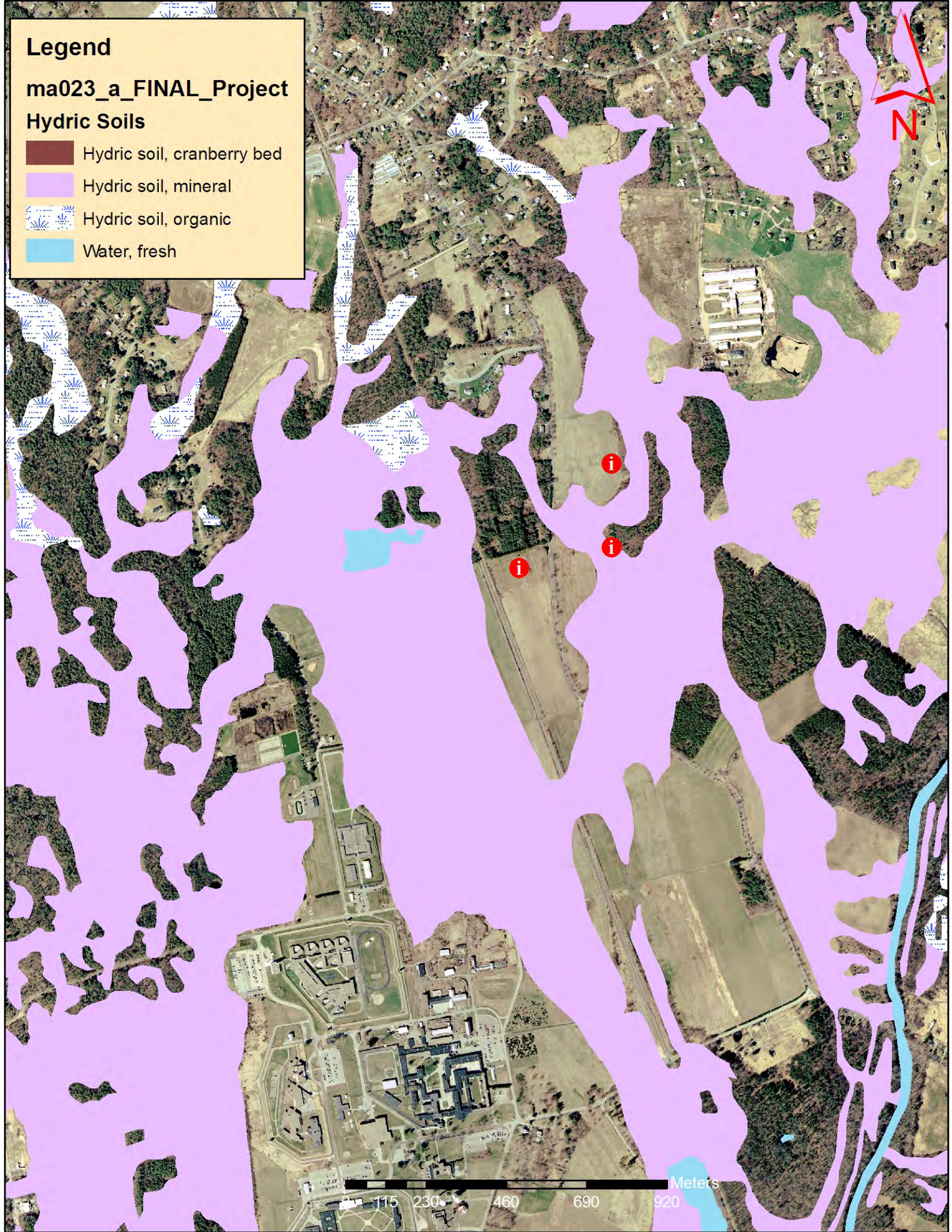


# Legend

ma023\_a\_FINAL\_Project

## Hydric Soils

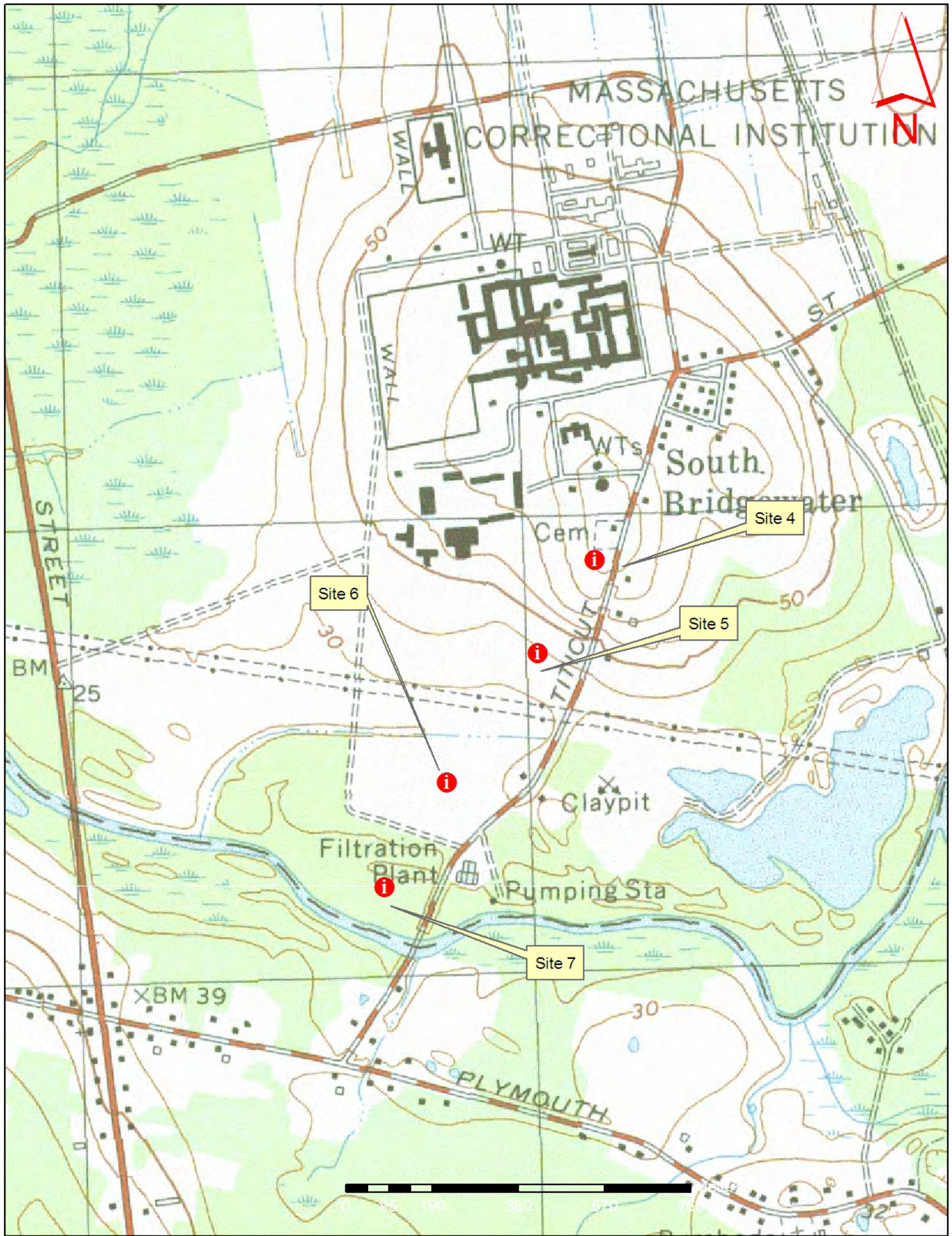
- Hydric soil, cranberry bed
- Hydric soil, mineral
- Hydric soil, organic
- Water, fresh



Meters

115 230 460 690 920





MASSACHUSETTS  
CORRECTIONAL INSTITUTION



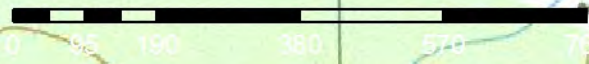
South.  
Bridgewater

Site 4

Site 5

Site 6

Site 7





0 95 190 380 570 760 Meters

# DEPWetland Legend

 Dep wetland



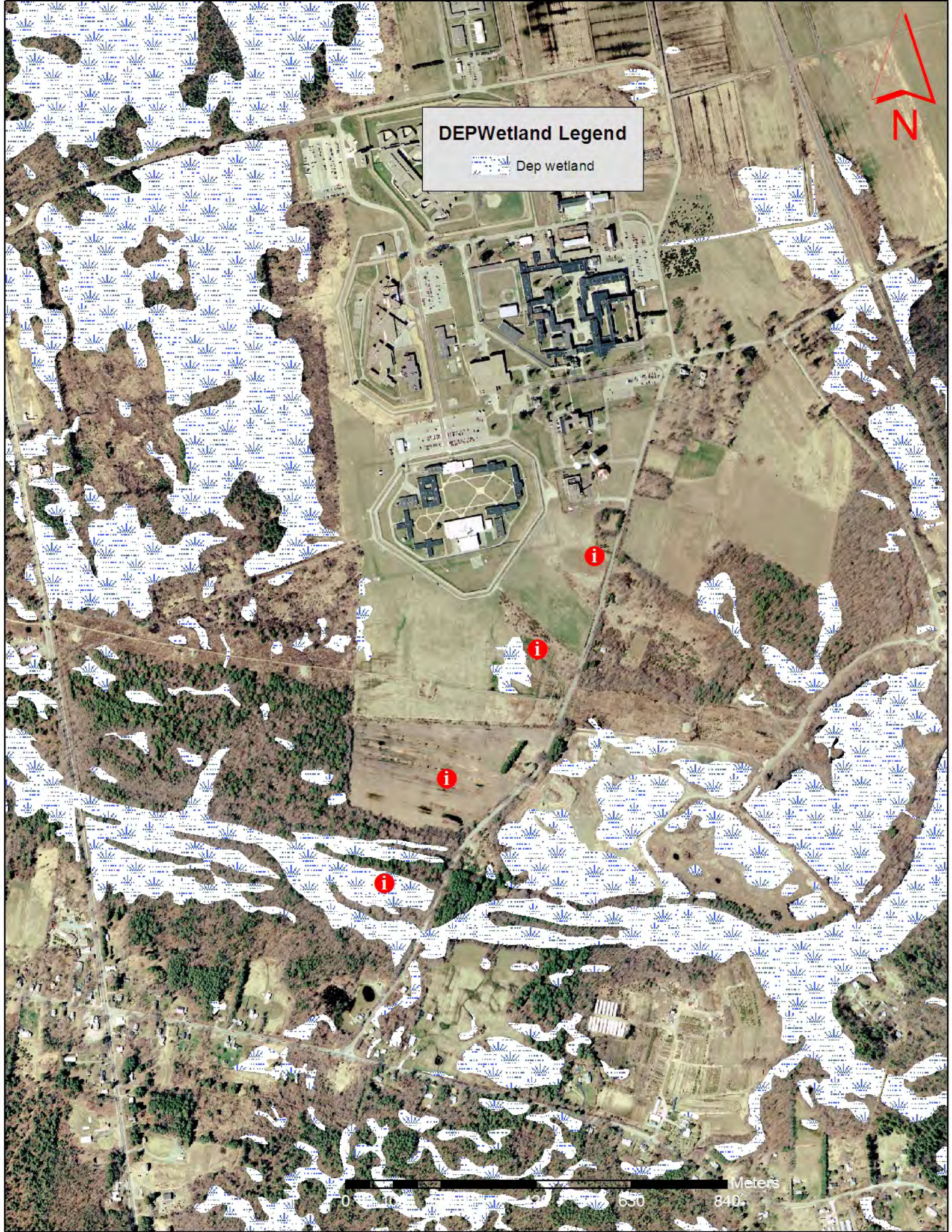
**i**

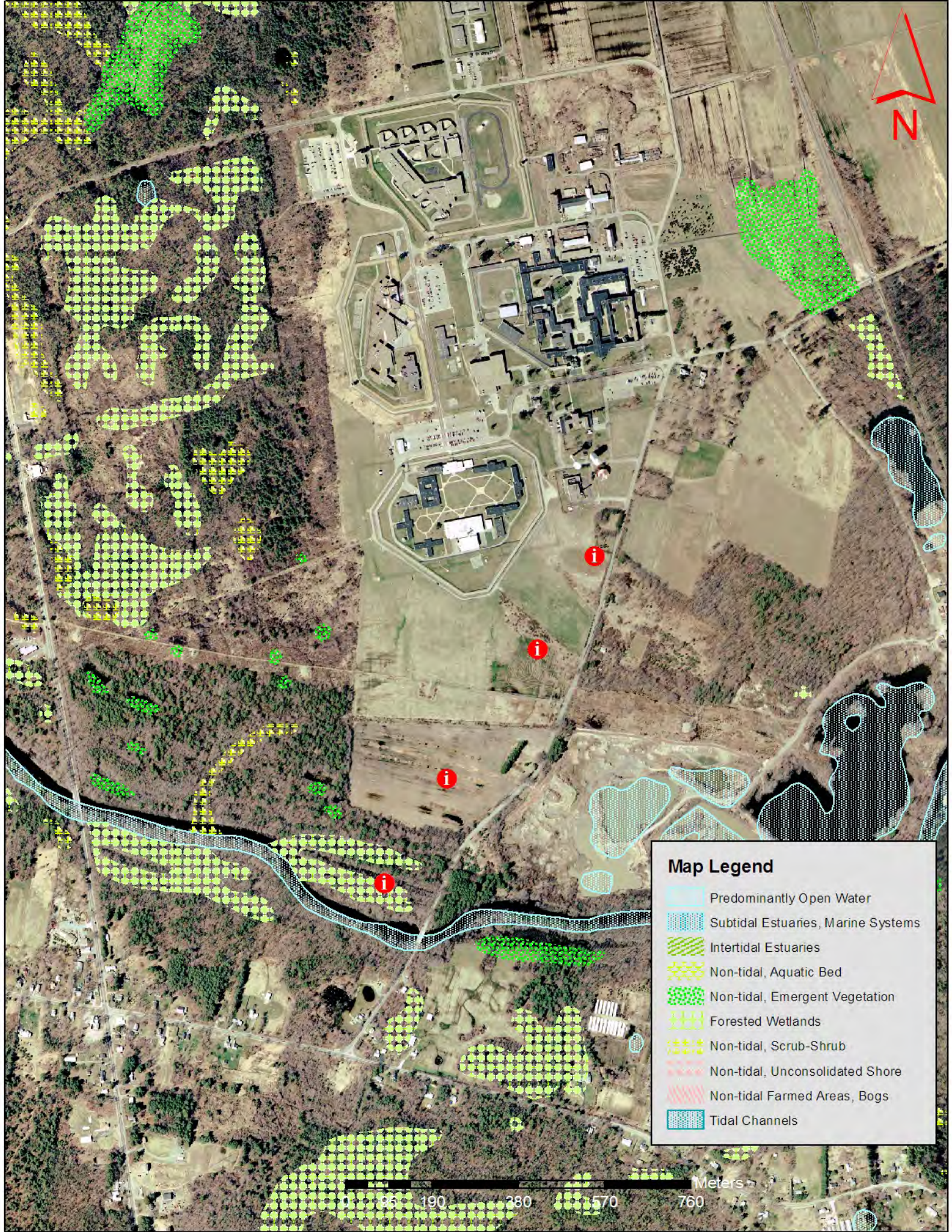
**i**

**i**

**i**

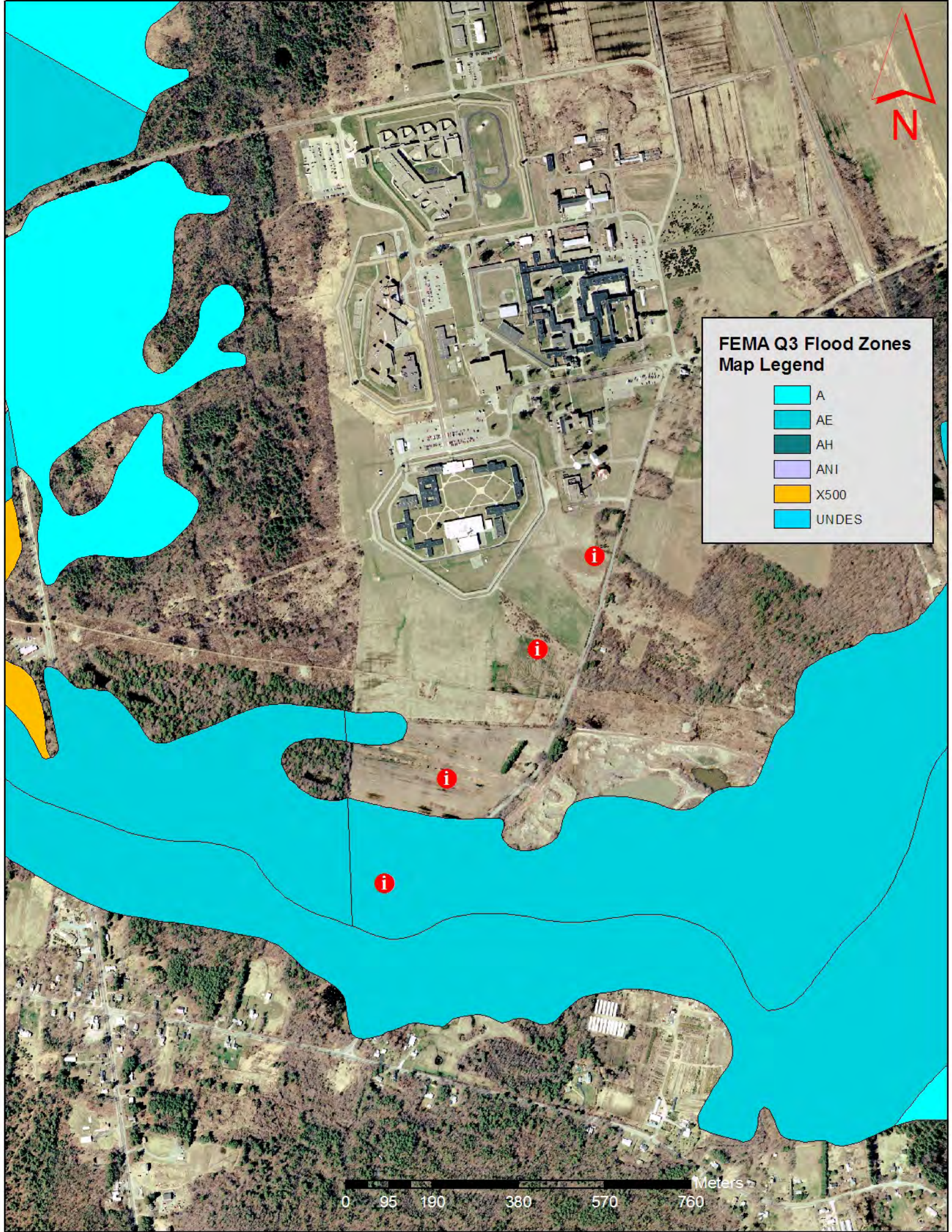
0 10 50 650 846 Meters





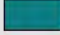
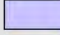




Map Legend	
	Predominantly Open Water
	Subtidal Estuaries, Marine Systems
	Intertidal Estuaries
	Non-tidal, Aquatic Bed
	Non-tidal, Emergent Vegetation
	Forested Wetlands
	Non-tidal, Scrub-Shrub
	Non-tidal, Unconsolidated Shore
	Non-tidal Farmed Areas, Bogs
	Tidal Channels

Meters  
0 95 190 380 570 760




**FEMA Q3 Flood Zones  
Map Legend**

	A
	AE
	AH
	ANI
	X500
	UNDES

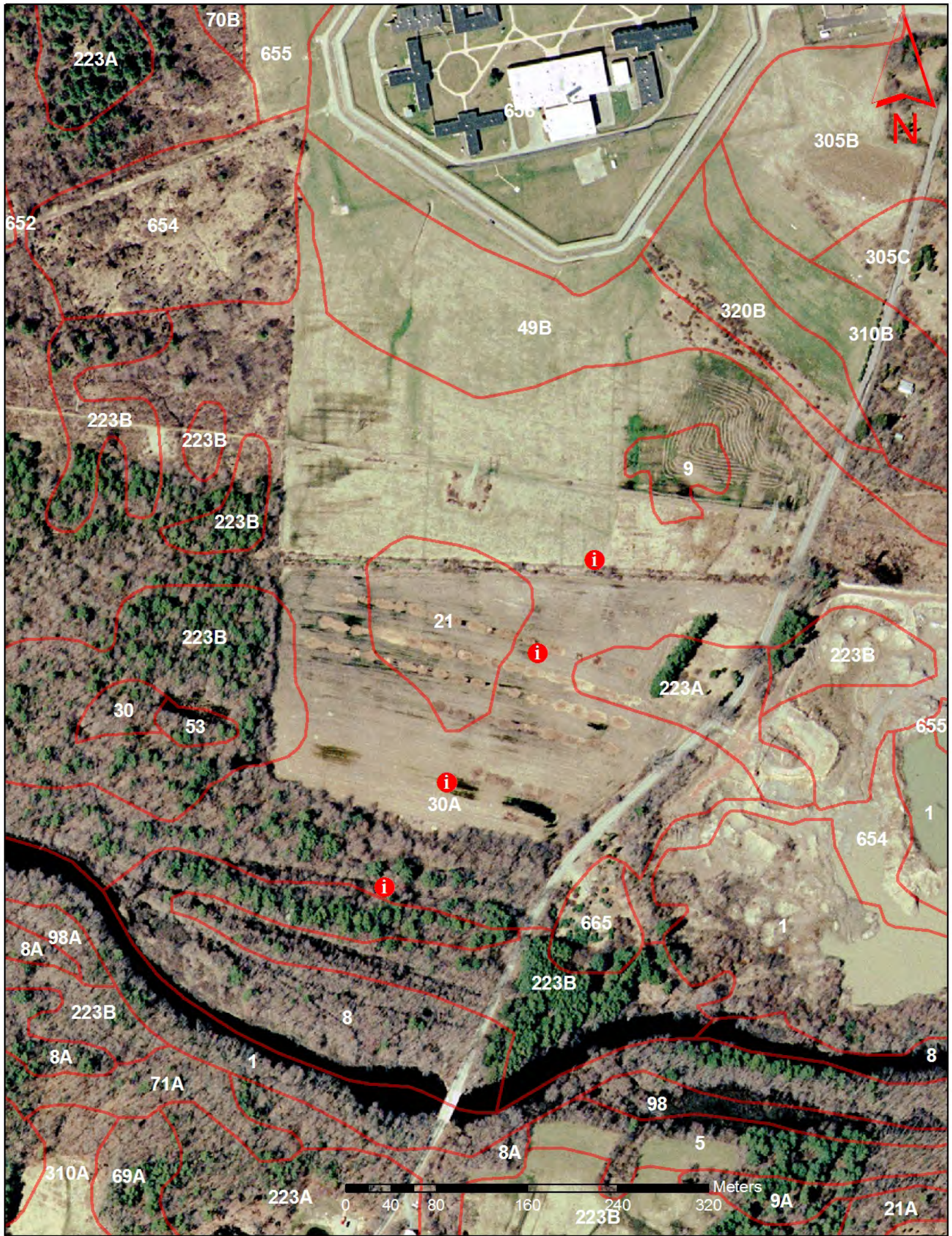
0 95 190 380 570 760 Meters

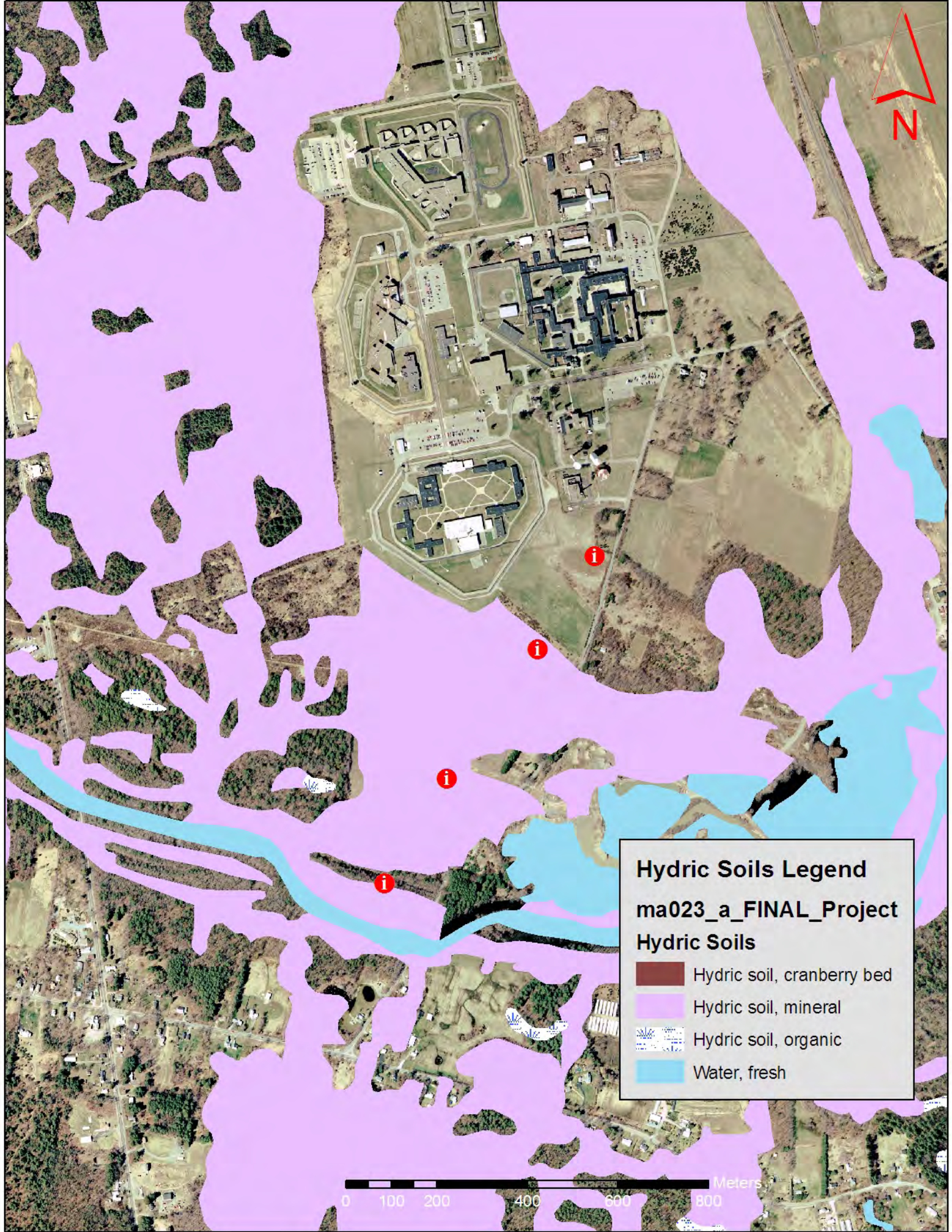


**Map Legend**





 Inside Setback Area











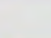






**Hydric Soils Legend**  
ma023\_a\_FINAL\_Project  
**Hydric Soils**

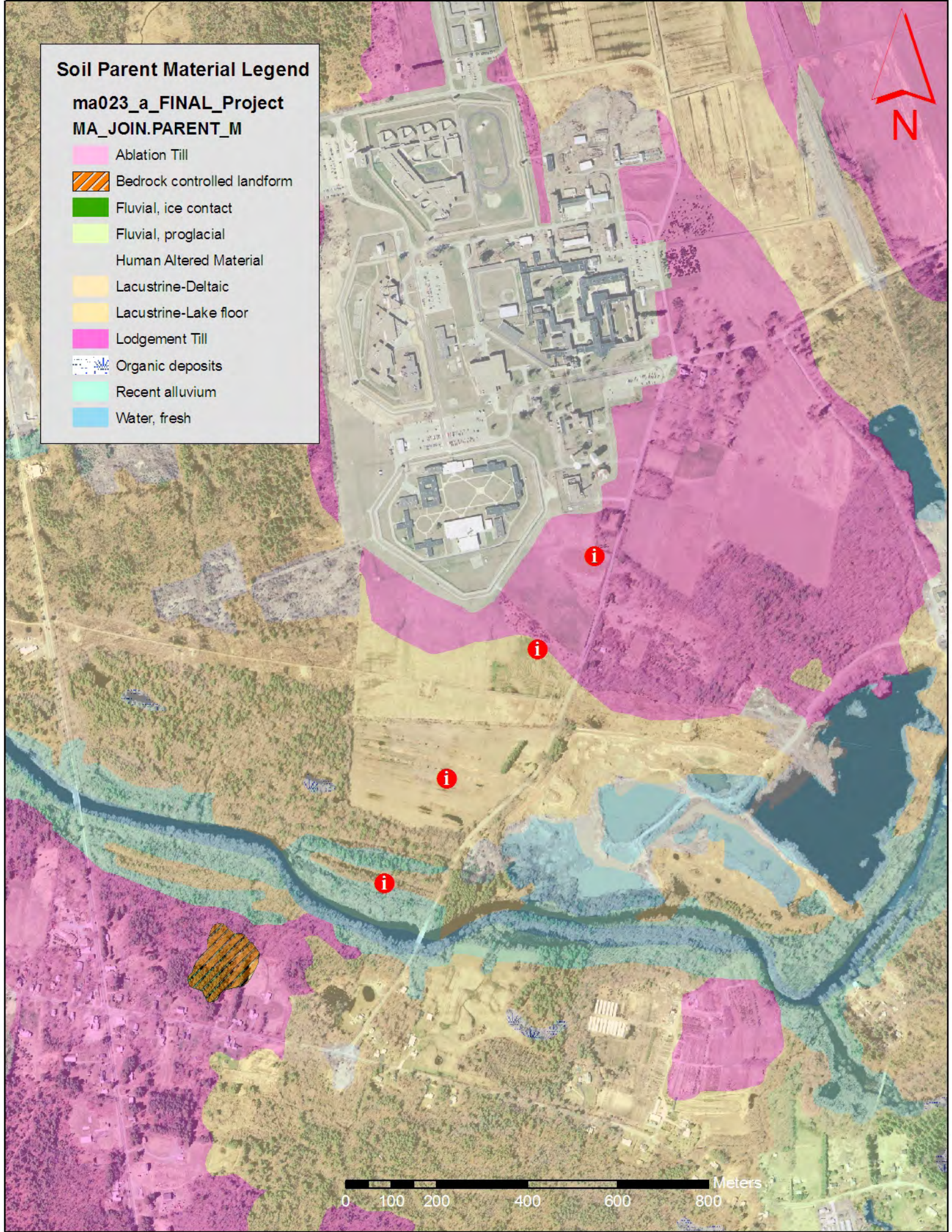
	Hydric soil, cranberry bed
	Hydric soil, mineral
	Hydric soil, organic
	Water, fresh



# Soil Parent Material Legend

ma023\_a\_FINAL\_Project  
MA\_JOIN.PARENT\_M

-  Ablation Till
-  Bedrock controlled landform
-  Fluvial, ice contact
-  Fluvial, proglacial
-  Human Altered Material
-  Lacustrine-Deltaic
-  Lacustrine-Lake floor
-  Lodgement Till
-  Organic deposits
-  Recent alluvium
-  Water, fresh



0 100 200 400 600 800 Meters



Site 4

Site 5

Site 7

Site 6

0 95 190 380 570 760 Meters

For explanations of Attribute fields (DEV, ONSEW, etc) visit: <a href="http://nesoil.com/gis/sesoilcd.htm#attribute">http://nesoil.com/gis/sesoilcd.htm#attribute</a>									
MUSYM	UNITNAME	DEV	ONSEW	HYDRIC	AGRIC	PARENT_M	HYDROGRP	DRAINCLASS	URL
1	Water	Water, fresh	Water, fresh	Water, fresh	Water, fresh	Water, fresh	Wat	NA	<a href="http://nesoil.com/muds/water.htm">http://nesoil.com/muds/water.htm</a>
6	Scarboro muck	Hydric soils	F	Hydric soil, mineral	Not rated	Fluvial, proglacial	D	VPD	<a href="http://nesoil.com/muds/scarboro.htm">http://nesoil.com/muds/scarboro.htm</a>
8	Limerick silt loam	Floodplain soils	E	Hydric soil, mineral	Not rated	Recent alluvium	C	PD	<a href="http://nesoil.com/muds/limerick.htm">http://nesoil.com/muds/limerick.htm</a>
9	Birdsall mucky silt loam, 0 to 3 %slopes	Hydric soils	F	Hydric soil, mineral	Not rated	Lacustrine-Lake floor	D	VPD	<a href="http://nesoil.com/muds/birdsall.htm">http://nesoil.com/muds/birdsall.htm</a>
20	Scarboro fine sandy loam, silty subsoil	Hydric soils	F	Hydric soil, mineral	Not rated	Lacustrine-Deltaic	D	VPD	<a href="http://nesoil.com/muds/scarboro.htm">http://nesoil.com/muds/scarboro.htm</a>
21	Enosburg loamy sand, 0 to 3 Percent Slopes	Hydric soils	F	Hydric soil, mineral	Not rated	Lacustrine-Deltaic	D	PD	<a href="http://nesoil.com/muds/enosburg.htm">http://nesoil.com/muds/enosburg.htm</a>
30	Raynham silt loam	Hydric soils	F	Hydric soil, mineral	Not rated	Lacustrine-Lake floor	C	VPD	<a href="http://nesoil.com/muds/cransoil.htm">http://nesoil.com/muds/cransoil.htm</a>
37	Massasoit-Mashpee complex, nearly level	Hydric soils	F	Hydric soil, mineral	Not rated	Fluvial, proglacial	C	PD	<a href="http://nesoil.com/muds/saugatuck.htm">http://nesoil.com/muds/saugatuck.htm</a>
48	Brockton sandy loam, extremely stony, 0 to 3 % slopes	Hydric soils	F	Hydric soil, mineral	Not rated	Lodgement Till	D	VPD	<a href="http://nesoil.com/muds/brockton.htm">http://nesoil.com/muds/brockton.htm</a>
51	Swansea muck	Hydric soils	F	Hydric soil, organic	Not rated	Organic deposits	D	VPD	<a href="http://nesoil.com/muds/norwell.htm">http://nesoil.com/muds/norwell.htm</a>
53	Freetown mucky peat, ponded	Hydric soils	F	Hydric soil, organic	Not rated	Organic deposits	D	VPD	<a href="http://nesoil.com/muds/freetown.htm">http://nesoil.com/muds/freetown.htm</a>
602	Urban land	Human Altered, cuts and fills	I	Upland soil	Not rated	Human Altered Material	UNC	NA	<a href="http://nesoil.com/muds/miscsoil.htm">http://nesoil.com/muds/miscsoil.htm</a>
652	Udorthents, refuse substratum	Landfills/Dumps	G	Upland soil	Not rated	Human Altered Material	UNC	NA	<a href="http://nesoil.com/muds/miscsoil.htm">http://nesoil.com/muds/miscsoil.htm</a>
654	Udorthents, loamy	Human Altered, cuts and fills	G	Upland soil	Not rated	Human Altered Material	UNC	MWD	<a href="http://nesoil.com/muds/miscsoil.htm">http://nesoil.com/muds/miscsoil.htm</a>
655	Udorthents, wet substratum	Human Altered, cuts and fills	B	Upland soil	Not rated	Human Altered Material	UNC	MWD	<a href="http://nesoil.com/muds/miscsoil.htm">http://nesoil.com/muds/miscsoil.htm</a>
656	Udorthents, urban land complex	Human Altered, cuts and fills	I	Upland soil	Not rated	Human Altered Material	UNC	NA	<a href="http://nesoil.com/muds/ulcomplex.htm">http://nesoil.com/muds/ulcomplex.htm</a>
657	Aquents	Hydric soils	F	Hydric soil, mineral	Not rated	Human Altered Material	D	PD	<a href="http://nesoil.com/muds/miscsoil.htm">http://nesoil.com/muds/miscsoil.htm</a>
665	Udipsamments, smooth	Human Altered, cuts and fills	G	Upland soil	Not rated	Human Altered Material	A	ED	<a href="http://nesoil.com/muds/miscsoil.htm">http://nesoil.com/muds/miscsoil.htm</a>
700	Udipsamments, wet substratum	Human Altered, cuts and fills	B	Upland soil	Not rated	Human Altered Material	UNC	MWD	<a href="http://nesoil.com/muds/miscsoil.htm">http://nesoil.com/muds/miscsoil.htm</a>
21A	Enosburg loamy sand, 0 to 3 Percent Slopes	Hydric soils	F	Hydric soil, mineral	Not rated	Lacustrine-Deltaic	D	PD	<a href="http://nesoil.com/muds/enosburg.htm">http://nesoil.com/muds/enosburg.htm</a>
221A	Eldridge sandy loam, 0 to 3 % slopes	ESHWT 1.5 to 4.0 feet, slow permeability	D	Upland soil	Prime Farmland	Lacustrine-Deltaic	B	MWD	<a href="http://nesoil.com/muds/eldridge.htm">http://nesoil.com/muds/eldridge.htm</a>
221B	Eldridge sandy loam, 3 to 8 % slopes	ESHWT 1.5 to 4.0 feet, slow permeability	D	Upland soil	Prime Farmland	Lacustrine-Deltaic	B	MWD	<a href="http://nesoil.com/muds/eldridge.htm">http://nesoil.com/muds/eldridge.htm</a>
223A	Scio very fine sandy loam, 0 to 3 % slopes	ESHWT 1.5 to 4.0 feet, slow permeability	D	Upland soil	Prime Farmland	Lacustrine-Lake floor	B	MWD	<a href="http://nesoil.com/muds/scio.htm">http://nesoil.com/muds/scio.htm</a>
223B	Scio very fine sandy loam, 3 to 8 % slopes	ESHWT 1.5 to 4.0 feet, slow permeability	D	Upland soil	Prime Farmland	Lacustrine-Lake floor	B	MWD	<a href="http://nesoil.com/muds/scio.htm">http://nesoil.com/muds/scio.htm</a>
255A	Windsor loamy sand, 0 to 3 % slopes	ESHWT > 4.0 feet, rapid permeability	A	Upland soil	Important Farmland	Fluvial, proglacial	A	ED	<a href="http://nesoil.com/muds/windsor.htm">http://nesoil.com/muds/windsor.htm</a>
255B	Windsor loamy sand, 3 to 8 % slopes	ESHWT > 4.0 feet, rapid permeability	A	Upland soil	Important Farmland	Fluvial, proglacial	A	ED	<a href="http://nesoil.com/muds/windsor.htm">http://nesoil.com/muds/windsor.htm</a>
255C	Windsor loamy sand, 8 to 15 % slopes	ESHWT > 4.0 feet, rapid permeability	A	Upland soil	Important Farmland	Fluvial, proglacial	A	ED	<a href="http://nesoil.com/muds/windsor.htm">http://nesoil.com/muds/windsor.htm</a>
256A	Deerfield loamy sand, 0 to 3 % slopes	ESHWT 1.5 to 4.0 feet, rapid permeability	B	Upland soil	Important Farmland	Fluvial, proglacial	B	MWD	<a href="http://nesoil.com/muds/deerfield.htm">http://nesoil.com/muds/deerfield.htm</a>
256B	Deerfield loamy sand, 3 to 8 % slopes	ESHWT 1.5 to 4.0 feet, rapid permeability	B	Upland soil	Important Farmland	Fluvial, proglacial	B	MWD	<a href="http://nesoil.com/muds/deerfield.htm">http://nesoil.com/muds/deerfield.htm</a>
259B	Carver loamy coarse sand, 3 to 8 % slopes	ESHWT > 4.0 feet, rapid permeability	A	Upland soil	Not rated	Fluvial, proglacial	A	ED	<a href="http://nesoil.com/muds/carver.htm">http://nesoil.com/muds/carver.htm</a>
259C	Carver loamy coarse sand, 8 to 15 % slopes	ESHWT > 4.0 feet, rapid permeability	A	Upland soil	Not rated	Fluvial, proglacial	A	ED	<a href="http://nesoil.com/muds/carver.htm">http://nesoil.com/muds/carver.htm</a>
260B	Sudbury fine sandy loam, 3 to 8 % slopes	ESHWT 1.5 to 4.0 feet, rapid permeability	B	Upland soil	Prime Farmland	Fluvial, proglacial	B	MWD	<a href="http://nesoil.com/muds/sudbury.htm">http://nesoil.com/muds/sudbury.htm</a>
305B	Paxton fine sandy loam, 3 to 8 % slopes	ESHWT 2.5 to 4.0 feet, slow permeability	C	Upland soil	Prime Farmland	Lodgement Till	C	WD	<a href="http://nesoil.com/muds/paxton.htm">http://nesoil.com/muds/paxton.htm</a>
305C	Paxton fine sandy loam, 8 to 15 % slopes	ESHWT 2.5 to 4.0 feet, slow permeability	C	Upland soil	Important Farmland	Lodgement Till	C	WD	<a href="http://nesoil.com/muds/paxton.htm">http://nesoil.com/muds/paxton.htm</a>
30A	Raynham silt loam, 0 to 3 % slopes	Hydric soils	F	Hydric soil, mineral	Not rated	Lacustrine-Lake floor	C	VPD	<a href="http://nesoil.com/muds/cransoil.htm">http://nesoil.com/muds/cransoil.htm</a>
310A	Woodbridge fine sandy loam, 0 to 3 % slopes	ESHWT 1.5 to 4.0 feet, slow permeability	D	Upland soil	Prime Farmland	Lodgement Till	C	MWD	<a href="http://nesoil.com/muds/woodbridge.htm">http://nesoil.com/muds/woodbridge.htm</a>
310B	Woodbridge fine sandy loam, 3 to 8 % slopes	ESHWT 1.5 to 4.0 feet, slow permeability	D	Upland soil	Prime Farmland	Lodgement Till	C	MWD	<a href="http://nesoil.com/muds/woodbridge.htm">http://nesoil.com/muds/woodbridge.htm</a>
311B	Woodbridge fine sandy loam, 3 to 8 % slopes, very stony	ESHWT 1.5 to 4.0 feet, slow permeability	D	Upland soil	Important Farmland	Lodgement Till	C	MWD	<a href="http://nesoil.com/muds/woodbridge.htm">http://nesoil.com/muds/woodbridge.htm</a>
320A	Birchwood loamy sand, 0 to 3 % slopes	ESHWT 1.5 to 4.0 feet, slow permeability	D	Upland soil	Prime Farmland	Lodgement Till	C	MWD	<a href="http://nesoil.com/muds/birchwood.htm">http://nesoil.com/muds/birchwood.htm</a>
320B	Birchwood loamy sand, 3 to 8 % slopes	ESHWT 1.5 to 4.0 feet, slow permeability	D	Upland soil	Prime Farmland	Lodgement Till	C	MWD	<a href="http://nesoil.com/muds/birchwood.htm">http://nesoil.com/muds/birchwood.htm</a>
321B	Birchwood loamy sand, 3 to 8 % slopes, very stony	ESHWT 1.5 to 4.0 feet, slow permeability	D	Upland soil	Important Farmland	Lodgement Till	C	MWD	<a href="http://nesoil.com/muds/birchwood.htm">http://nesoil.com/muds/birchwood.htm</a>
48A	Brockton sandy loam, extremely stony, 0 to 3 % slopes	Hydric soils	F	Hydric soil, mineral	Not rated	Lodgement Till	D	VPD	<a href="http://nesoil.com/muds/brockton.htm">http://nesoil.com/muds/brockton.htm</a>
49A	Norwell sandy loam, 0 to 3 % slopes, extremely stony	Hydric soils	F	Hydric soil, mineral	Not rated	Lodgement Till	C	PD	<a href="http://nesoil.com/muds/norwell.htm">http://nesoil.com/muds/norwell.htm</a>
49B	Norwell sandy loam, 3 to 8 % slopes, extremely stony	Hydric soils	F	Hydric soil, mineral	Not rated	Lodgement Till	C	PD	<a href="http://nesoil.com/muds/norwell.htm">http://nesoil.com/muds/norwell.htm</a>
51A	Swansea muck, 0 to 3 % slopes	Hydric soils	F	Hydric soil, organic	Not rated	Organic deposits	D	VPD	<a href="http://nesoil.com/muds/norwell.htm">http://nesoil.com/muds/norwell.htm</a>
651A	Udorthents, smoothed	Human Altered, cuts and fills	G	Upland soil	Not rated	Human Altered Material	UNC	ED	<a href="http://nesoil.com/muds/miscsoil.htm">http://nesoil.com/muds/miscsoil.htm</a>
654B	Udorthents, loamy, 0 to 3 % slopes	Human Altered, cuts and fills	G	Upland soil	Not rated	Human Altered Material	UNC	MWD	<a href="http://nesoil.com/muds/miscsoil.htm">http://nesoil.com/muds/miscsoil.htm</a>
655A	Udorthents, wet substratum, nearly level	Human Altered, cuts and fills	B	Upland soil	Not rated	Human Altered Material	UNC	MWD	<a href="http://nesoil.com/muds/miscsoil.htm">http://nesoil.com/muds/miscsoil.htm</a>
70A	Ridgebury fine sandy loam, 0 to 3 % slopes	Hydric soils	F	Hydric soil, mineral	Not rated	Lodgement Till	C	PD	<a href="http://nesoil.com/muds/ridgebury.htm">http://nesoil.com/muds/ridgebury.htm</a>
70B	Ridgebury fine sandy loam, 3 to 8 % slopes	Hydric soils	F	Hydric soil, mineral	Not rated	Lodgement Till	C	PD	<a href="http://nesoil.com/muds/ridgebury.htm">http://nesoil.com/muds/ridgebury.htm</a>
71A	Ridgebury fine sandy loam, 0 to 3 % slopes, extremely stony	Hydric soils	F	Hydric soil, mineral	Not rated	Lodgement Till	C	PD	<a href="http://nesoil.com/muds/ridgebury.htm">http://nesoil.com/muds/ridgebury.htm</a>
8A	Limerick silt loam	Floodplain soils	E	Hydric soil, mineral	Not rated	Recent alluvium	C	PD	<a href="http://nesoil.com/muds/limerick.htm">http://nesoil.com/muds/limerick.htm</a>
98A	Winooski very fine sandy loam	Floodplain soils	E	Upland soil	Prime Farmland	Recent alluvium	B	MWD	<a href="http://nesoil.com/muds/winooski.htm">http://nesoil.com/muds/winooski.htm</a>

9A	Birdsall mucky silt loam, 0 to 3 %slopes	Hydric soils	F	Hydric soil, mineral	Not rated	Lacustrine-Lake floor	D	VPD	<a href="http://nesoil.com/muds/birdsall.htm">http://nesoil.com/muds/birdsall.htm</a>
----	--	--------------	---	----------------------	-----------	-----------------------	---	-----	---