

Directions to Soil Judging Practice Pits.

Lost – call Jim Turenne cell 401-255-6206, pit location are posted at:

<http://maps.google.com/maps/ms?hl=en&ie=UTF8&msa=0&ll=41.508577,-71.523743&spn=0.447349,0.829468&z=10&msid=113798583893585652288.00044a47d1e9615317358>

Alton Jones Sites: 1 through 5 (<http://www.uri.edu/ajc/>)

The W. Alton Jones Campus is located off Route 102, 2.5 miles north (102 north) of the intersection with Route 95. The entrance to W. Alton Jones is on the left (west) watch for the sign (Browns Corner Road).

For folks staying at the **West Greenwich** Best Western take Route 95 South to the exit for route 102 north.

For folks staying in **Newport**: get onto route 138 west which is the Newport Toll Bridge (\$2 toll or \$1 if you buy tokens – sorry no speed pass). Follow 138 west over the Jamestown Bridge (free) and watch for exit with route 1 and 4 north. Stay on main highway which is route 4 north. Follow 4 north for about 3 miles to the exit for route 102 north.

For folks staying at Holiday Inn, **North Kingston**: As you pull out of parking lot IMMEDIATELY get into left lane so you can get onto route 1 north at the stop light. Follow 1 north until you come to the 1st stop light which is the route 4 merge – get onto route 4 north. Follow 4 north for about 3 miles to the exit for route 102 north.

Both Newport and North Kingston Folks: Follow Route 4 north to Route 102 north. Continue on 102 north past the intersection with route 3 and then 95 after you pass the route 95 exit at approximately 2.5 miles you will see the entrance to W. Alton Jones Campus and Whispering Pines Conference Center. It is about 11 miles from route 4 to Alton Jones on route 102.

Site 1:

Follow the entrance road to W. Alton Jones/Whispering Pines Conference Center until you come to the end of the road where you have to go either left or right (past the scenic pasture with boulders). Take a left (sign for Environmental Education Center). Follow road for 0.3 miles and watch for the sign for the Environmental Ed Center, bear to left – onto a dirt road, site 1 is .2 miles from here watch for the blue and pink flags and the “corner trail” marker – pit is to left next to dirt road.

Site 2:

Follow the entrance to W. Alton Jones until you come to the end of the road past the scenic pasture with boulders. Take a right – sign for Whispering Pines Conference Center. At 0.3 miles from this turn watch for a right turn into the Nettie Marie Jones Nature Preserve (Blue and Pink flags). Park in the small lot in front of the house (rest rooms there) and walk along the narrow field – site 2 will be in an old borrow pit to the left (blue and pink flags).

Sites 3, 4, and 5:

Follow the entrance road to W. Alton Jones/Whispering Pines Conference Center until you come to the end of the road (past the scenic pasture with boulders). Take a right (Whispering Pines Conference Center). Follow the road for 0.9 miles (over a pond) until you get to a fork – a sign tells you to bear right to get to conference center – **bear left** (straight through) and follow the dirt road.

Site 3 – once on the dirt road at 0.1 miles watch for the blue and pink flagging and a narrow dirt road to the left, follow the dirt road over two small streams and watch for the flagging, site 3 will be on the right. Be careful driving on this narrow wood road there is one good sized bump.

Sites 4 and 5: from the dirt road that split for the conference center continue on the dirt road for about 2 miles (past site 3), past the memorial for Dr. Shoop, watch for the flagging (blue and pink) the pits are on the left side up the hill (site 4) and continue west down the hill to the stream for site 5 (terrace scarp).

To return back to 102 turn car around and follow dirt road out to the fork and follow signs to conference center and exit. A rest room is in the Laurel Lounge.

Peckham Farm and Associated Sites 6, 7, 8, 9, and 10

Peckham Farm is located off route 138 just west of the URI main campus entrance, across the street from the large neon sign for the Ryan Center.

From **West Greenwich** Best Western – take route 95 south to exit 3A, route 138 east (sign for South Kingstown and URI). Follow 138 east for approximately 9 miles. After you pass the stop light for route 110 the entrance to the farm is on the right just before you begin heading up a hill.

From Holiday Inn **North Kingston** – pull out of parking lot which is route 1 south and take right at light for 138 west. From **Newport** get onto Newport Bridge which is route 138 west, past the toll booth and continue on 138 west over the Jamestown bridge (free) follow to the end where 138 merges with route 1 south – follow 138 west / route 1 south past the Holiday Inn and take a right onto 138 west (Moorsfield Road). Follow 138 west for approximately 4.4 miles, past the entrance to URI, as you get to the bottom of the hill the entrance to Peckham Farm is on the left (Blue Sign).

Sites, 7, 8, and 9. To get to the soil pits follow the access road (watch for large turf vehicles), watch for blue and pink flagging. As you enter past the gate follow the dirt road and head towards the weather station to the south east. Site 7 is in the field; sites 8 and 9 are in the woods in the southeast corner.

Site 6 – Aquapaug: To get to site 6 head back out of Peckham Farm and take a left onto 138 west. At stop light (route 110 Ministerial Road) take a left and follow route 110 south for 3.7 miles until you get to a flashing light/stop sign. At stop sign take a right onto Wordens Pond Road and park on road just after the intersection – site 6 is in wood to north, follow the pink and blue flagging.

Site 10 – Old North Road: from Peckham Farm take a right onto 138 east. At the stop light (entrance to URI) take a left and follow Upper College Road to the end, take a right and head up Flagg Road to the end then take a left on Old North Road the site is less than 0.5 miles on the left, look for an access road and cleared area. The pit is along the access road.

Casey Farm, Wilson Park, and Jamestown, Sites 11, 12, 13, 14, and 15:

There are three separate locations for these pits – the central drive to location will be the park and ride on route 1A at the off ramp of Route 1A and 138 in North Kingstown. Following are directions:

From **West Greenwich Best Western**: Get onto Route 95 north and watch for the Route 2 and 4 exit (Newport and South County). Follow route 2 south for about 3.5 miles – watch for exit to route 4 south. Follow route 4 south until it ends and merges into route 1 south. Take route 138 east (Newport Exit), and get off at route 1A (1st exit) – the park and ride is across street from off ramp.

From **North Kingston Holiday Inn**: As soon as you get out of parking lot immediately get into left lane so you can head north onto route 1 at the intersection (stop light route 1 and 138). Follow route 1 north until the 138 east exit (Newport exit) follow 138 east to the 1st exit which is route 1A – the park and ride is across street from off ramp.

From **Newport**: Take 138 west over both Newport (Toll) and Jamestown (free) bridge (If you are going to Sites 12 and 13, exit as soon as you go through the Newport Bridge toll plaza). After the Jamestown Bridge you will travel up a hill through a bedrock outcrop cut. Take 1st exit after Jamestown Bridge and at off ramp take a right over 138 – Park and Ride is on left before the Hess Station.

Site 11: Wilson Park:

From the Park and Ride take a right onto route 1A north, follow for approximately 3.5 miles until you get to Wickford Village (over small bridge and intersection with 102) – bear right at this intersection to stay on route 1A through the village (Brown Street). At end of Wickford Village the road bears left heading back to route 1 – watch for the right turn entrance to Wilson Park (swing set). Once in the park follow the road along the fields to the end, and then take a right to the boat ramp. Park at the boat ramp lot the soil pit is a coastal bluff outcrop just south of the ramp.

Site 12 and 13: Jamestown Community Farm:

From the route 1A Park and Ride head straight out at intersection and get onto the on ramp for 138 east. Follow 138 east over the Jamestown Bridge after you get off bridge you will follow 138 east to the exit just before the toll booth which is the Jamestown Exit (do not go past onto toll booth or you will have to pay the \$2 toll). Follow off ramp to end and continue straight which will take you under the bridge. Follow the road as if you were going to get back onto 138 west but at stop sign continue straight on East Shore Drive. As a side note – taking a right just after you pass under the bridge is a parking area for the beach and Taylor Point is a nice exposure of the meta-sedimentary rocks found in the area. Follow East Shore Road until a stop sign, take a left onto Eldridge Road the pits are on top of

the hill in the community farm, Site 13 is just north of the entrance road to the reservoir. To get back onto 138 west take the on-ramp just after the hilltop.

Sites 14 and 15: Casey Farm:

From route 1A Park and Ride lot take a left on route 1A south, follow 1A south for approximately 1 mile and watch for entrance to Casey Farm on the right. Site 14 is just north of the parking area in the fields to north. To get to site 15 follow the dirt farm road through fields and into the wooded area, eventually you will be heading west along a long dirt road to the boys camp. Site 15 is at the bottom of the hill follow blue and pink flagging

Burlingame Campground and East Beach– Sites 16 through 21:

From **West Greenwich Best Western**: Take route 95 south all the way into Connecticut and watch for the exit for route 2 and 78 (Westerly Beaches), take route 2 to route 78 and follow to route 1. Take a left on route 1 north, follow route 1 north for about 5.5 miles and watch for the sign for the Burlingame Camp site, there is a stop light for East Beach Road, this is a left turn (stay in left lane after you pass the Shell gas station on right). If heading to Site 16 and 17 first on route 1 at the stop light for East Beach Road, take a right – follow that road all the way to end (DEM Parking).

From **Holiday Inn and Newport**: follow route 138 west to merge with route 1 south and follow route 1 south for about 20 miles, watch for 2nd Burlingame Campground exit called Klondike Road follow exit in to Klondike Road off Old Post Road. There is a stop light for East Beach Road – a right at the stop light takes you to Sites 18 – 21, a left at the East Beach Road light takes you to Site 16 and 17.

Sites 18 and 19: Follow the exit off route 1 to Klondike Road and the entrance to Burlingame Campground. Go past the DEM facility (stop if someone at gate and let them know who you are), shortly after the gate you will see a dirt road with a yellow gate to right, DO NOT drive into the road instead park on the opposite side of the road and walk the dirt road into the pits, follow flagging. The pits are in the NW corner of the open area, one is an old borrow pit the other in a depression just north.

Sites 20 and 21: from the Klondike Road entrance continue straight past the DEM entrance and watch for a gated dirt road .3 miles past the DEM entrance. Park on Klondike and follow path north to the pits. NOTE: Mark is checking with Charlestown Police to see if OK to park on road which is signed as no parking, if the gate is open drive in until you get to pits. Site 20 is to the right of the road, 21 is up the dirt road a bit in a depression on the right – look for flagging.

Sites 16 and 17: From the Burlingame area head back out to the stop light (arrow pointing right to route 1). Go straight through the stop light to East Beach Road (if you need a bathroom/food go south on 1 to the next turn around and stop at the Shell gas station). Follow East Beach Road to end and bear left on bumpy dirt road. Go to the end and park in the DEM lot. Walk either along the access road (CRMC sign) or along the beach to south (Atlantic Ocean) or North (Ninigret Pond – easier walk) until you get to the second clump of Pitch pines the site are located on the back barrier watch for flags. There is one pit here, be careful not to lean on sides. In the area of Pitch Pines are some subaqueous soil cores that were taken from Ninigret Pond to look at PLEASE do not pick at these cores just observe the horizons, descriptions are provided. These cores have been stored at 40F for several years and have undergone oxidation, none of the iron was present when described.

Directions to Duffy's Tavern

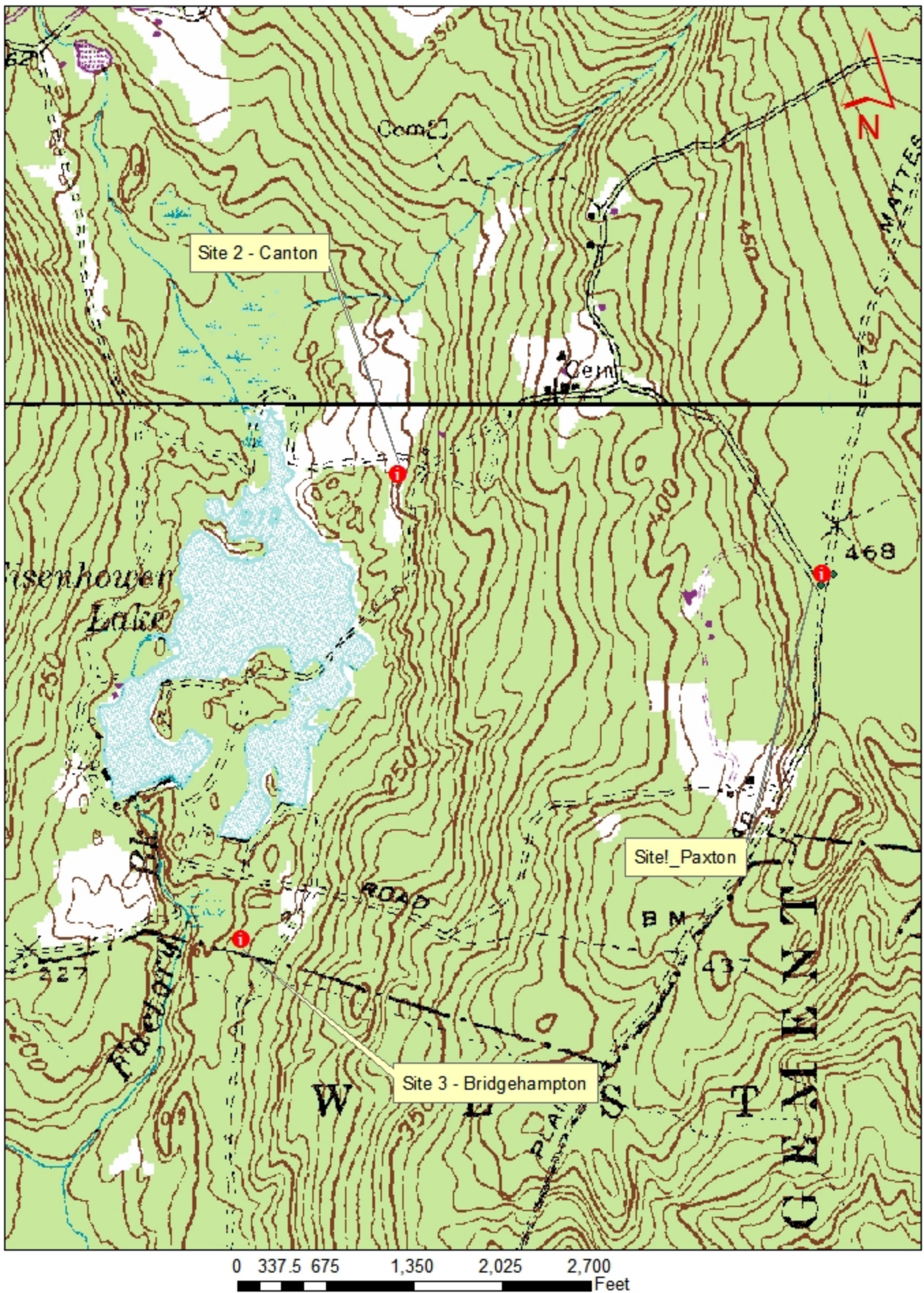
From **West Greenwich** Best Western: Take route 95 south to the exit for route 2 and 4 (Newport). Take either route 2 south or get onto 4 south via 401 and take route 102 east (second 102 exit). Follow 102 past the Home Depot and route 2 until you get to route 1 stop light, take a left onto route 1 north Duffy's is on the left.

From **North Kingston** Holiday Inn - get onto route 1 north by taking a left at the stop light with 138 after pulling out of parking lot. From Newport – follow 138 west to the route 1 north off ramp. Follow route 1 north for about 2 miles after the split with route 4, Duffy's will be on the left just past route 102 light.

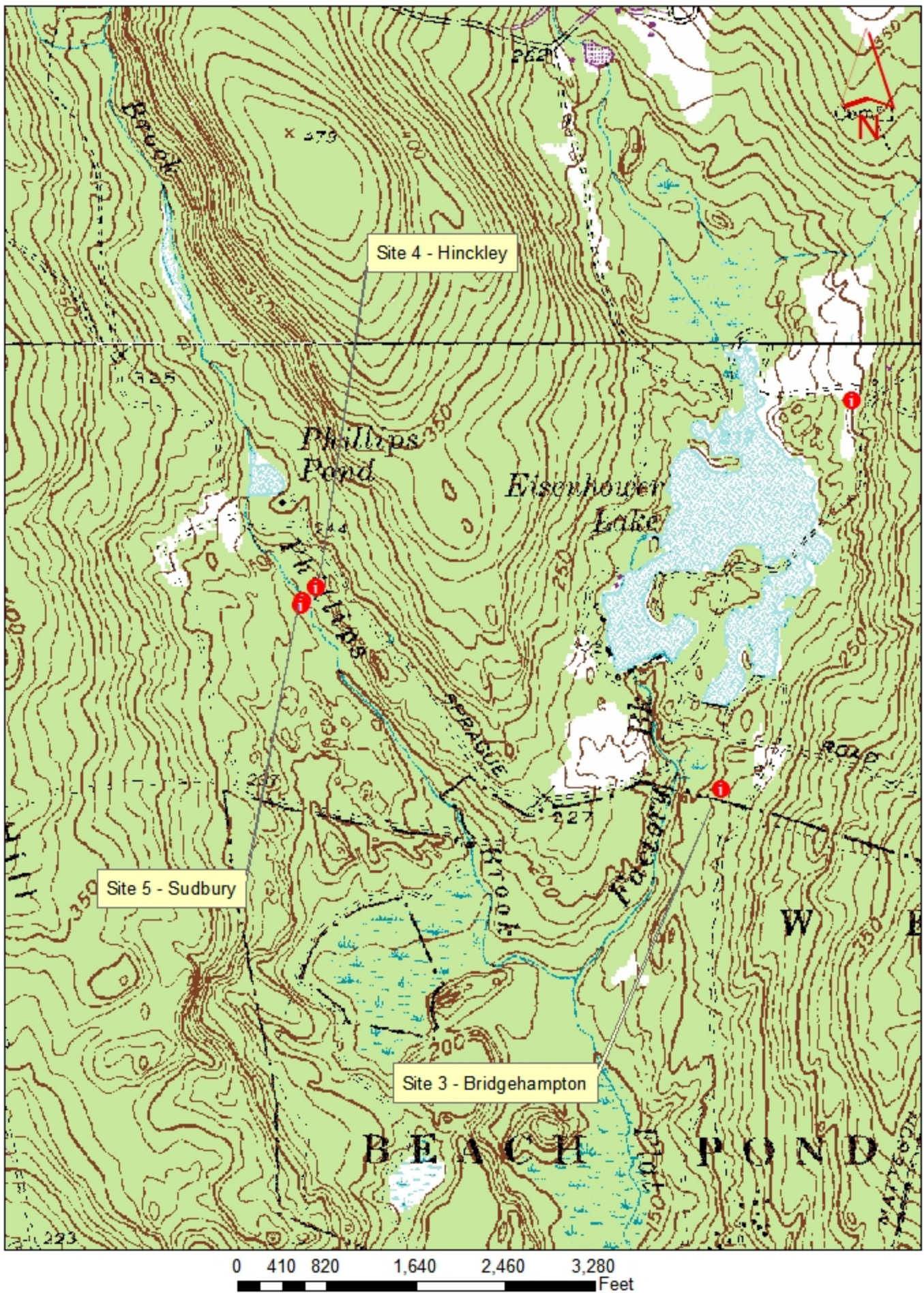
Directions to Sunday Meeting Parking and area to meet on Thursday and Friday – URI Fine Arts Parking.

Follow the main entrance to URI on Upper College Road to the end, take a right up Flagg Road and enter the parking area.

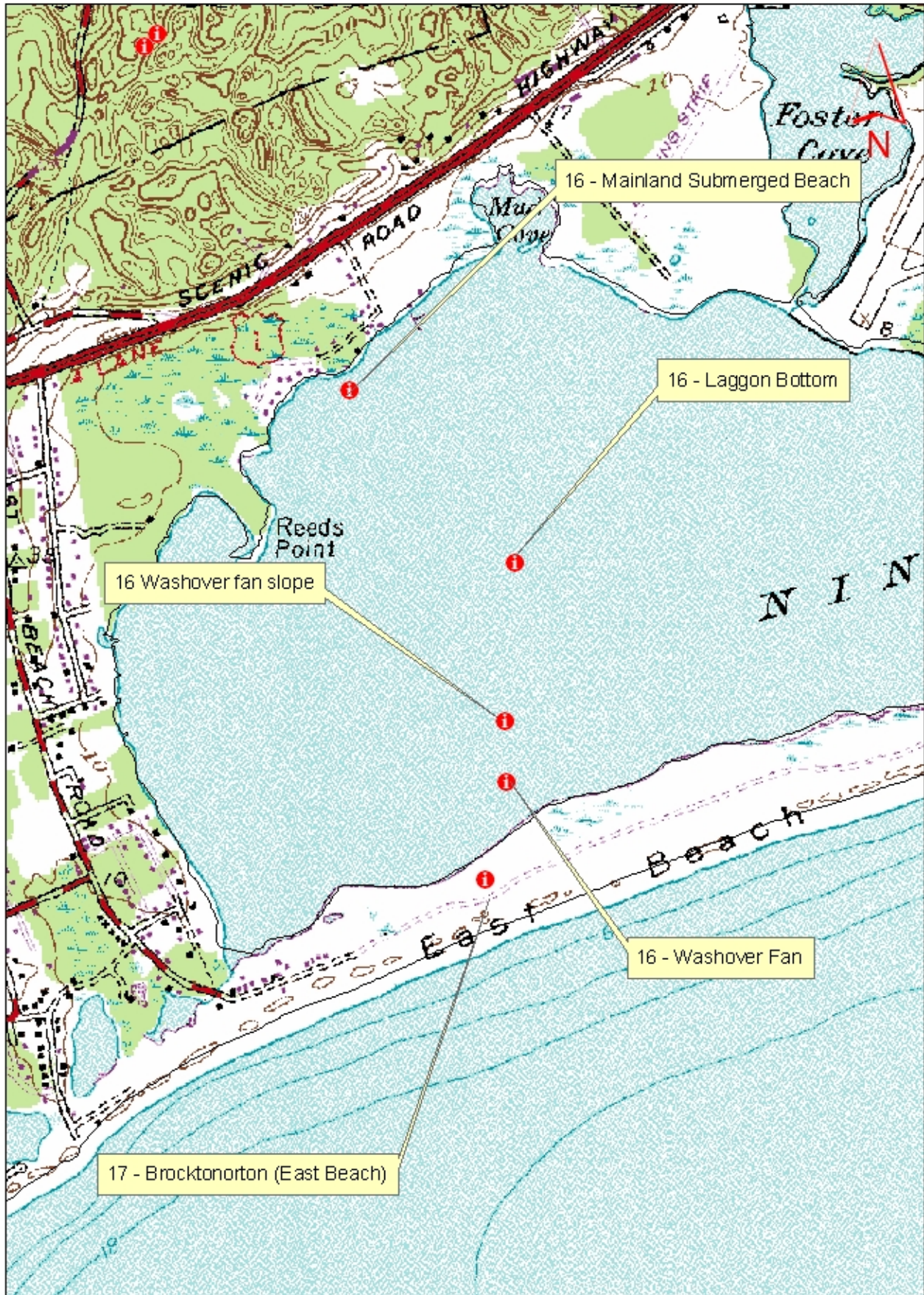
Alton Jones Sites 1, 2 and 3



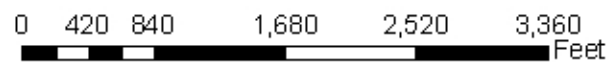
Alton Jones Sites 3, 4 and 5



Burlingame - Sites 16 and 17 (East Beach)



Burlingame - Sites 18 to 21

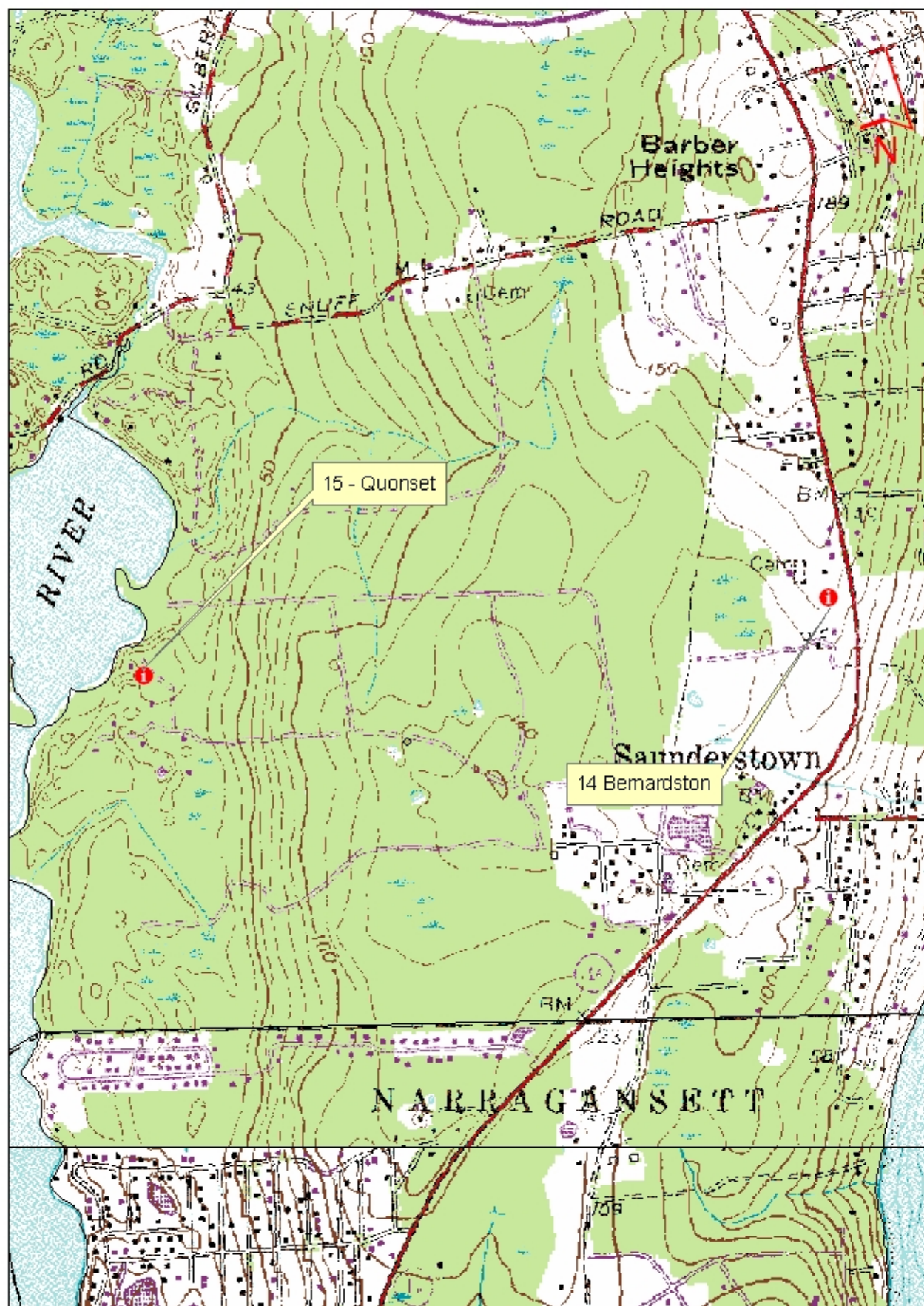


Casey/Jamestown - Site 12 and 13 (Jamestown Farm)



0 420 840 1,680 2,520 3,360
Feet

Casey/Jamestown - Sites 14 and 15 (Casey Farm)



0 420 840 1,680 2,520 3,360
Feet

Peckham Farm - Site 6 (Aquapaug)



6 - Aquapaug (Massasoit)

0 420 840 1,680 2,520 3,360 Feet

Peckham Farm - Sites 7 through 10

